

Product datasheet for **TA320206**

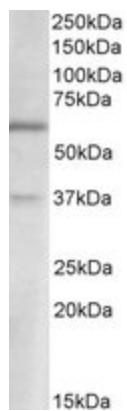
VGLUT2 (SLC17A6) Goat Polyclonal Antibody

Product data:

| | |
|-------------------------|---|
| Product Type: | Primary Antibodies |
| Applications: | WB |
| Recommended Dilution: | WB: 1-3ug/ml, ELISA: 1:2,000 |
| Reactivity: | Human (Expected from sequence similarity: Mouse, Rat, Dog, Pig, Cow) |
| Host: | Goat |
| Isotype: | IgG |
| Clonality: | Polyclonal |
| Immunogen: | Peptide with sequence C-EDELDEETGDITQN (aa521-534), from the internal region of the protein sequence according to NP_065079.1 |
| Formulation: | Supplied at 0.5 mg/ml in Tris saline, 0.02% sodium azide, pH7.3 with 0.5% bovine serum albumin |
| Concentration: | lot specific |
| Purification: | Purified from goat serum by ammonium sulphate precipitation followed by antigen affinity chromatography using the immunizing peptide |
| Conjugation: | Unconjugated |
| Storage: | Store at -20°C as received. |
| Stability: | Stable for 12 months from date of receipt. |
| Predicted Protein Size: | 64.4 kDa |
| Gene Name: | solute carrier family 17 member 6 |
| Database Link: | NP_065079 Entrez Gene 84487 Rat Entrez Gene 140919 Mouse Entrez Gene 100316859 Dog Entrez Gene 57084 Human Q9P2U8 |
| Synonyms: | DNPI; VGLUT2 |
| Note: | An additional band of unknown identity was also consistently observed at 37kDa. This band was successfully blocked by incubation with the immunizing peptide. |
| Protein Families: | Transmembrane |



[View online »](#)

Product images:

Anti-SLC17A6 (2ug/ml) staining of Human Cerebellum lysate (35ug protein in RIPA buffer). Primary incubation was 1 hour. Detected by chemiluminescence.