

Product datasheet for **TA320201**

SLAMF8 Goat Polyclonal Antibody

Product data:

Product Type:	Primary Antibodies
Applications:	WB
Recommended Dilution:	WB: 0.01-0.03ug/ml, ELISA: 1:32,000
Reactivity:	Human
Host:	Goat
Isotype:	IgG
Clonality:	Polyclonal
Immunogen:	Peptide with sequence C-HADRVGPETENP, from the C Terminus of the protein sequence according to NP_064510.1
Formulation:	Supplied at 0.5 mg/ml in Tris saline, 0.02% sodium azide, pH7.3 with 0.5% bovine serum albumin
Concentration:	lot specific
Purification:	Purified from goat serum by ammonium sulphate precipitation followed by antigen affinity chromatography using the immunizing peptide
Conjugation:	Unconjugated
Storage:	Store at -20°C as received.
Stability:	Stable for 12 months from date of receipt.
Predicted Protein Size:	31.7 kDa
Gene Name:	SLAM family member 8
Database Link:	NP_064510 Entrez Gene 56833 Human Q9P0V8
Background:	BLAME (B Lymphocyte Activator Macrophage Expressed) also called SLAMF8. BLAME is a type I transmembrane protein that belongs to the CD2 family of Ig superfamily receptors. BLAME is mostly expressed on macrophages and dendritic cells.
Synonyms:	BLAME; CD353; SBB142

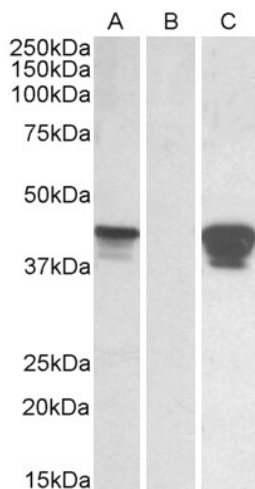


[View online »](#)

Note: In transfected HEK293 transiently expressing Human SLAMF8 a band of approx. 45kDa is observed. This band is not observed in the non-transfected HEK293. The calculated molecular size is 31.7kDa according to NP_064510.1.

Protein Families: Druggable Genome, Transmembrane

Product images:



HEK293 lysate (10ug protein in RIPA buffer) overexpressing Human SLAMF8 with C-terminal MYC tag probed with anti-SLAMF8 (0.01ug/ml) in Lane A and probed with anti-MYC Tag (1/1000) in lane C. Mock-transfected HEK293 probed with anti-SLAMF8 (0.01ug/ml) in Lane B. Primary incubations were for 1 hour. Detected by chemiluminescence.