

Product datasheet for **TA320200**

SHISA9 Rabbit Polyclonal Antibody

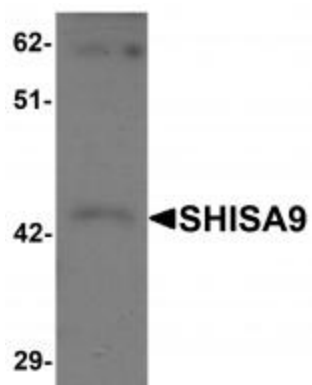
Product data:

| | |
|-----------------------|--|
| Product Type: | Primary Antibodies |
| Applications: | IF, IHC, WB |
| Recommended Dilution: | WB: 1 ug/mL, ICC: 2.5 ug/mL, IF: 20 ug/mL |
| Reactivity: | Human, Mouse, Rat |
| Host: | Rabbit |
| Isotype: | IgG |
| Clonality: | Polyclonal |
| Immunogen: | SHISA9 antibody was raised against a 22 amino acid synthetic peptide near the center of human SHISA9. |
| Formulation: | SHISA9 Antibody is supplied in PBS containing 0.02% sodium azide. |
| Concentration: | 1ug/ul |
| Purification: | SHISA9 Antibody is affinity chromatography purified via peptide column. |
| Conjugation: | Unconjugated |
| Storage: | Store at -20°C as received. |
| Stability: | Stable for 12 months from date of receipt. |
| Gene Name: | shisa family member 9 |
| Database Link: | NP_001138676 Entrez Gene 72555 Mouse Entrez Gene 100361134 Rat Entrez Gene 729993 Human B4DS77 |
| Background: | SHISA9 Antibody: Shisa proteins are a recently-identified family of modulators of both FGF and Wnt signaling that block both maturation and transport to the cell surface of their respective receptors. SHISA9, also known as CKAMP44a, is a brain-specific type I transmembrane protein that associates with AMPA receptors in synaptic spines and promotes AMPA receptor desensitization at excitatory synapses. It is thought to modulate short-term plasticity at specific excitatory synapses. |
| Synonyms: | CKAMP44 |

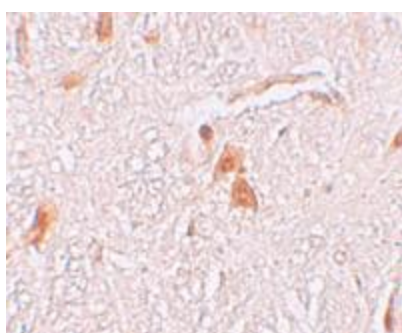


[View online »](#)

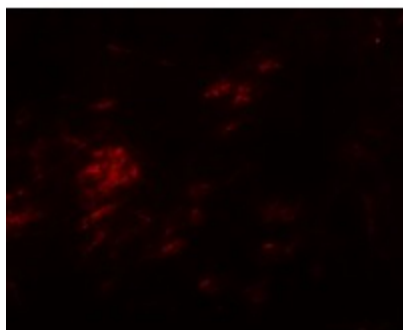
Product images:



Western blot analysis of SHISA9 in rat brain tissue lysate with SHISA9 antibody at 1 ug/mL.



Immunohistochemistry of SHISA9 in human brain tissue with SHISA9 antibody at 2.5 ug/mL.



Immunofluorescence of SHISA9 in human brain tissue with SHISA9 antibody at 20 ug/mL.