

Product datasheet for **TA320199**

ZBTB8 (ZBTB8A) Rabbit Polyclonal Antibody

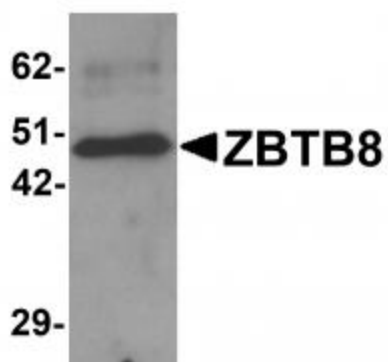
Product data:

Product Type:	Primary Antibodies
Applications:	IF, IHC, WB
Recommended Dilution:	WB: 1 ug/mL, ICC: 2.5 ug/mL, IF: 5 ug/mL
Reactivity:	Human, Mouse
Host:	Rabbit
Isotype:	IgG
Clonality:	Polyclonal
Immunogen:	ZBTB8 antibody was raised against a 17 amino acid synthetic peptide near the carboxy terminus of human ZBTB8.
Formulation:	ZBTB8 Antibody is supplied in PBS containing 0.02% sodium azide.
Concentration:	1ug/ul
Purification:	ZBTB8 Antibody is affinity chromatography purified via peptide column.
Conjugation:	Unconjugated
Storage:	Store at -20°C as received.
Stability:	Stable for 12 months from date of receipt.
Gene Name:	zinc finger and BTB domain containing 8A
Database Link:	NP_001035531 Entrez Gene 73680 Mouse Entrez Gene 653121 Human Q96BR9
Background:	ZBTB8 Antibody: The ZBTB family of proteins is comprised of diverse zinc finger proteins that also contain a BTB (BR-C, ttk and bab) domain. ZBTB8, also known as BOZ-F1, is present in multiple tissues, and is highly expressed in the cytoplasm of the placenta. While little is known about ZBTB8, other ZBTB proteins, such as ZBTB4 bind methylated DNA and repress transcription. Another ZBTB proteins, ZBTB7A, has been implicated as a proto-oncogene whose overexpression contributes to malignancy in breast cancer, suggesting that ZBTB8 may act as a transcriptional repressor or be involved in tumorigenesis.
Synonyms:	BOZF1; ZBTB8; ZNF916A

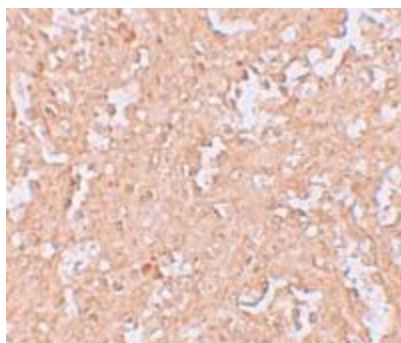


[View online »](#)

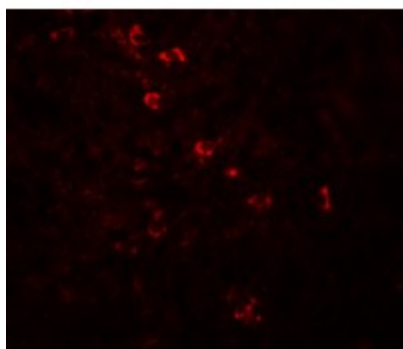
Product images:



Western blot analysis of ZBTB8 in mouse spleen tissue lysate with ZBTB8 antibody at 1 ug/mL.



Immunohistochemistry of ZBTB8 in human spleen tissue with ZBTB9 antibody at 2.5 ug/mL.



Immunofluorescence of ZBTB8 in human spleen tissue with ZBTB8 antibody at 20 ug/mL.