

Product datasheet for **TA320198**

GEMC1 (GMNC) Rabbit Polyclonal Antibody

Product data:

Product Type:	Primary Antibodies
Applications:	WB
Recommended Dilution:	WB: 1 ug/mL
Reactivity:	Human, Mouse
Host:	Rabbit
Isotype:	IgG
Clonality:	Polyclonal
Immunogen:	GEMC1 antibody was raised against a 19 amino acid synthetic peptide near the center of human GEMC1.
Formulation:	GEMC1 Antibody is supplied in PBS containing 0.02% sodium azide.
Concentration:	1ug/ul
Purification:	GEMC1 Antibody is affinity chromatography purified via peptide column.
Conjugation:	Unconjugated
Storage:	Store at -20°C as received.
Stability:	Stable for 12 months from date of receipt.
Gene Name:	geminin coiled-coil domain containing
Database Link:	NP_001140158 Entrez Gene 239789 Mouse Entrez Gene 647309 Human A6NCL1



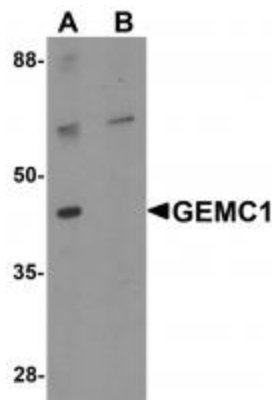
[View online »](#)

Background:

GEMC1 Antibody: The Geminin coiled-coil domain-containing protein 1 (GEMC1) is a highly conserved protein that is required for chromosomal replication. GEMC1 contains a region similar to the coiled-coil domain of geminin, an essential vertebrate replication protein in which the coiled-coil domain is required for the function. GEMC1 binds to the checkpoint and replication factor TopBP1, allowing the binding of GEMC1 to chromatin during pre-replication complex formation. GEMC1 also directly interacts with replication factors Cdc45 and Cdk2-CyclinE and stimulates the initiation of DNA replication. Depletion of GEMC1 by siRNA in embryonic and somatic vertebrate cells prevents DNA replication due to impairment of Cdc45 loading onto chromatin, suggesting GEMC1 promotes initiation of DNA replication by mediating TopBP1 and Cdk2 dependent recruitment of Cdc45 onto replication origins.

Synonyms:

GEMC1

Product images:

Western blot analysis of GEMC1 in mouse heart tissue lysate with GEMC1 antibody at 1 ug/mL in (A) the absence and (B) the presence of blocking peptide