

Product datasheet for **TA320197**

RASSF10 Rabbit Polyclonal Antibody

Product data:

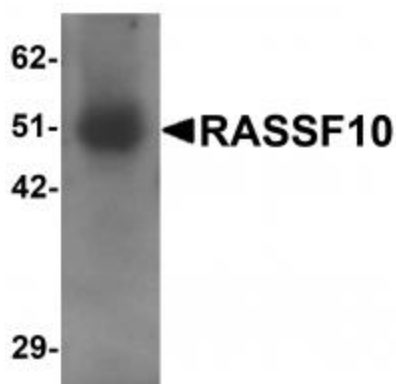
Product Type:	Primary Antibodies
Applications:	IHC, WB
Recommended Dilution:	WB: 1 ug/mL, ICC: 5 ug/mL
Reactivity:	Human
Host:	Rabbit
Isotype:	IgG
Clonality:	Polyclonal
Immunogen:	RASSF10 antibody was raised against a 17 amino acid synthetic peptide near the amino terminus of human RASSF10.
Formulation:	RASSF10 Antibody is supplied in PBS containing 0.02% sodium azide.
Concentration:	1ug/ul
Purification:	RASSF10 Antibody is affinity chromatography purified via peptide column.
Conjugation:	Unconjugated
Storage:	Store at -20°C as received.
Stability:	Stable for 12 months from date of receipt.
Gene Name:	Ras association domain family member 10
Database Link:	NP_001073990 Entrez Gene 644943 Human A6NK89
Background:	RASSF10 Antibody: RASSF10 is a member of the N-terminal Ras association domain-containing family of proteins, a family of tumor suppressor genes that are frequently epigenetically inactivated in cancer. These proteins consist of RASSF7-10 and are structurally distinct from RASSF1-6, containing the N-terminal Ras association domain but lacking the Sav/RASSF/Hippo protein interaction domains. While little is known of the function of RASSF10, it is inactivated in both childhood leukemia and gliomas. In secondary glioblastomas, RASSF10 methylation can be used as an independent prognostic associated with worst progression-free survival and overall survival.



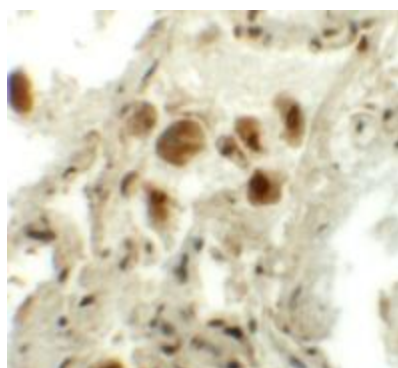
[View online »](#)

Synonyms: AF-6) domain family (N-terminal) member 10; peptidylglycine alpha-amidating monooxygenase COOH-terminal interactor-like; Ras association (RalGDS

Product images:



Western blot analysis of RASSF10 in human lung tissue lysate with RASSF10 antibody at 1 ug/mL



Immunohistochemistry of RASSF10 in human lung tissue with RASSF10 antibody at 5 ug/mL.