

Product datasheet for **TA320194**

DRGX Chicken Polyclonal Antibody

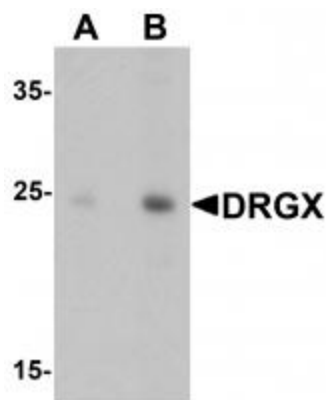
Product data:

Product Type:	Primary Antibodies
Applications:	IF, WB
Recommended Dilution:	WB: 1 - 2 ug/mL, IF: 20 ug/mL
Reactivity:	Human, Mouse, Rat
Host:	Chicken
Isotype:	IgY
Clonality:	Polyclonal
Immunogen:	DRGX antibody was raised against a 19 amino acid synthetic peptide near the carboxy terminus of human DRGX.
Formulation:	DRGX Antibody is supplied in PBS containing 0.02% sodium azide.
Concentration:	1 mg/ml
Purification:	DRGX Antibody is affinity chromatography purified via peptide column.
Conjugation:	Unconjugated
Storage:	Store at -20°C as received.
Stability:	Stable for 12 months from date of receipt.
Gene Name:	dorsal root ganglia homeobox
Database Link:	NP_001073989 Entrez Gene 252880 Rat Entrez Gene 644168 Human A6NNA5
Background:	DRGX Antibody: DRGX, also known as DRG11 or PRRXL1, is a paired homeodomain transcription factor, and was initially cloned from a differential hybridization screen aimed at identifying dorsal root ganglia (DRG)-specific genes. DRGX is a key regulator of the differentiation of the spinal cord neuronal circuit dedicated to the processing of nociceptive information. DRGX is also important for the formation of the whisker-related somatosensory maps in the principal sensory nucleus of the trigeminal nerve, thalamus and somatosensory cortex.
Synonyms:	DRG11; PRRXL1

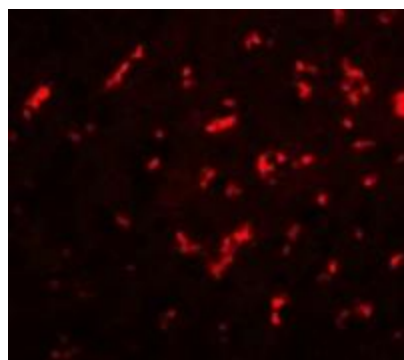


[View online »](#)

Product images:



Western blot analysis of DRGX in rat liver tissue lysate with DRGX antibody at (A) 1 and (B) 2 ug/mL.



Immunofluorescence of DRGX in rat liver cells with DRGX antibody at 20 ug/mL.