

Product datasheet for **TA320193**

SDHAF1 Rabbit Polyclonal Antibody

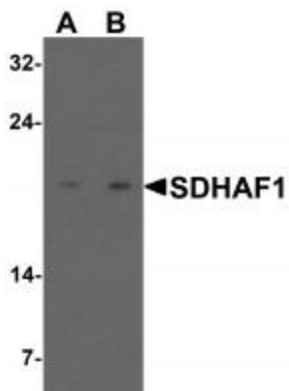
Product data:

Product Type:	Primary Antibodies
Applications:	IF, WB
Recommended Dilution:	WB: 1 - 2 ug/mL, ICC: 5 ug/mL, IF: 5 ug/mL
Reactivity:	Human, Mouse
Host:	Rabbit
Isotype:	IgG
Clonality:	Polyclonal
Immunogen:	SDHAF1 antibody was raised against an 18 amino acid synthetic peptide near the carboxy terminus of human SDHAF1.
Formulation:	SDHAF1 Antibody is supplied in PBS containing 0.02% sodium azide.
Purification:	SDHAF1 Antibody is affinity chromatography purified via peptide column.
Conjugation:	Unconjugated
Storage:	Store at -20°C as received.
Stability:	Stable for 12 months from date of receipt.
Gene Name:	succinate dehydrogenase complex assembly factor 1
Database Link:	NP_001036096 Entrez Gene 68332 Mouse Entrez Gene 644096 Human A6NFY7
Background:	SDHAF1 Antibody: SDHAF1 (Succinate dehydrogenase complex assembly factor 1) is one of the subunits of the succinate dehydrogenase (SDH) complex (or complex II) of the mitochondrial respiratory chain. SDHAF1 resides in the mitochondria, and is essential for SDH assembly, but does not physically associate with the complex in vivo. Mutations in this gene are associated with SDH-defective infantile leukoencephalopathy (mitochondrial complex II deficiency). Unlike the related protein SDHAF2, SDHAF1 is not thought to be a tumor suppressor.
Synonyms:	LYRM8

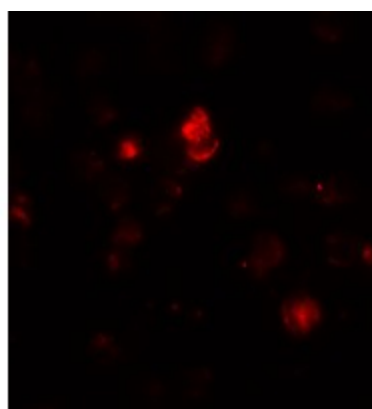


[View online »](#)

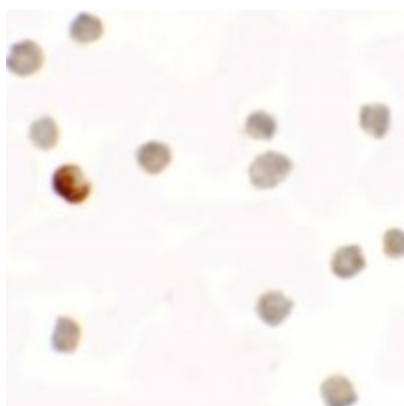
Product images:



Western blot analysis of SDHAF1 in 3T3 cell lysate with SDHAF1 antibody at (A) 1 and (B) 2 ug/mL.



Immunofluorescence of SDHAF1 in 3T3 cells with SDHAF1 antibody at 20 ug/mL.



Immunocytochemistry of SDHAF1 in 3T3 cells with SDHAF1 antibody at 5 ug/mL.