

## Product datasheet for TA320192

### CISD2 Rabbit Polyclonal Antibody

#### Product data:

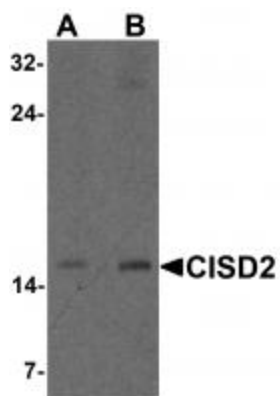
Product Type:	Primary Antibodies
Applications:	IF, IHC, WB
Recommended Dilution:	WB: 1 - 2 ug/mL
Reactivity:	Human, Mouse, Rat
Host:	Rabbit
Isotype:	IgG
Clonality:	Polyclonal
Immunogen:	CISD2 antibody was raised against a 15 amino acid peptide near the center of human CISD2.
Formulation:	CISD2 Antibody is supplied in PBS containing 0.02% sodium azide.
Concentration:	1ug/ul
Purification:	CISD2 Antibody is affinity chromatography purified via peptide column.
Conjugation:	Unconjugated
Storage:	Store at -20°C as received.
Stability:	Stable for 12 months from date of receipt.
Predicted Protein Size:	Predicted: 15 kDa; Observed: 15 kDa
Gene Name:	CDGSH iron sulfur domain 2
Database Link:	<a href="#">NP_001008389</a> <a href="#">Entrez Gene 67006 MouseEntrez Gene 295457 RatEntrez Gene 493856 Human Q8N5K1</a>
Background:	CISD2 Antibody: Defects in the CISD2 (CDGSH iron sulfur domain 2) gene are a cause of the neurodegenerative disorder Wolfram syndrome 2. CISD2 is a zinc finger protein that localizes to the endoplasmic reticulum and mitochondria and binds an iron/sulfur cluster. CISD2 interacts with Bcl-2 and can be displaced by the BH3-only protein BIK and contributes to the regulation of BIK-initiated autophagy. CISD2 deficiency in mice causes mitochondrial breakdown accompanied by autophagic cell death as well as the development of premature aging phenotype.
Synonyms:	ERIS; Miner1; NAF-1; WFS2; ZCD2



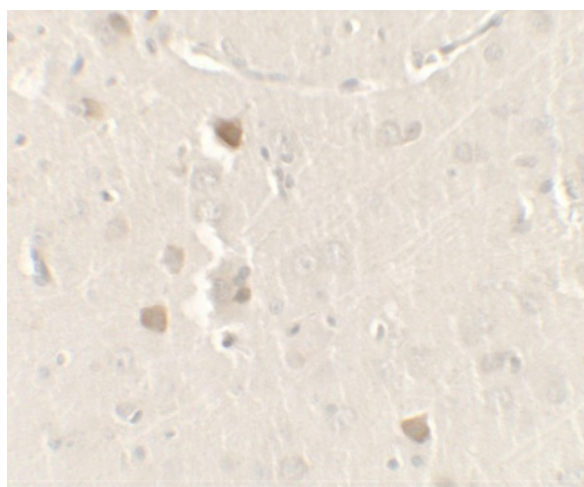
[View online »](#)

Protein Families: Transmembrane

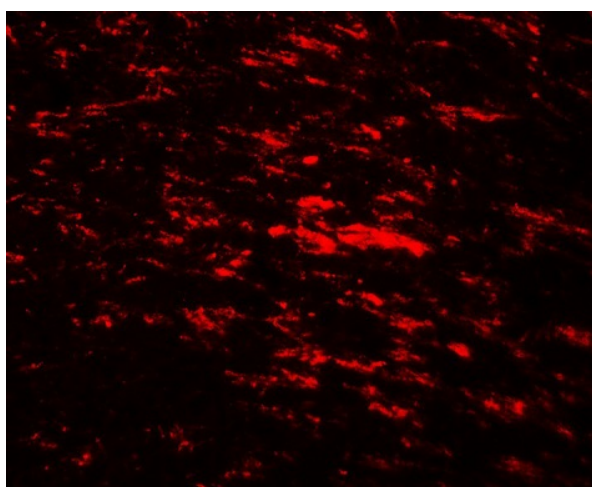
**Product images:**



Western blot analysis of CISD2 in rat brain tissue lysate with CISD2 antibody at (A) 1 and (B) 2  $\mu$ g/m



Immunohistochemistry of CISD2 in rat brain tissue with CISD2 antibody at 2.5  $\mu$ g/mL.



Immunofluorescence of CISD2 in rat brain tissue with CISD2 antibody at 20  $\mu$ g/mL.