

Product datasheet for **TA320190**

PIWIL3 Rabbit Polyclonal Antibody

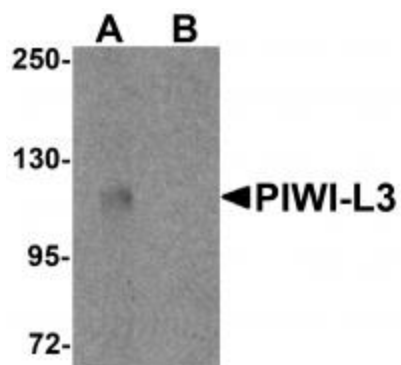
Product data:

Product Type:	Primary Antibodies
Applications:	IF, WB
Recommended Dilution:	WB: 1 ug/mL, IF: 20 ug/mL
Reactivity:	Human, Mouse, Rat
Host:	Rabbit
Isotype:	IgG
Clonality:	Polyclonal
Immunogen:	PIWI-L3 antibody was raised against an 18 amino acid synthetic peptide near the amino terminus of human PIWI-L3.
Formulation:	PIWI-L3 Antibody is supplied in PBS containing 0.02% sodium azide.
Concentration:	1ug/ul
Purification:	PIWI-L3 Antibody is affinity chromatography purified via peptide column.
Conjugation:	Unconjugated
Storage:	Store at -20°C as received.
Stability:	Stable for 12 months from date of receipt.
Gene Name:	piwi like RNA-mediated gene silencing 3
Database Link:	NP_001008496 Entrez Gene 440822 Human Q7Z3Z3
Background:	PIWI-L3 Antibody: PIWI-L3 is a member of the PIWI subfamily of Argonaute proteins, evolutionarily conserved proteins containing both PAZ and Piwi motifs that are crucial for the biogenesis and function of small non-coding RNAs and play important roles in stem cell self-renewal, RNA silencing, and translational regulation in diverse organisms. Recent studies have shown that overexpression of PIWI-L3 (as well as other PIWI-like proteins) are potential biomarkers for astrocytic glioma, meningioma, and other cancers.
Synonyms:	HIWI3
Protein Pathways:	Dorso-ventral axis formation

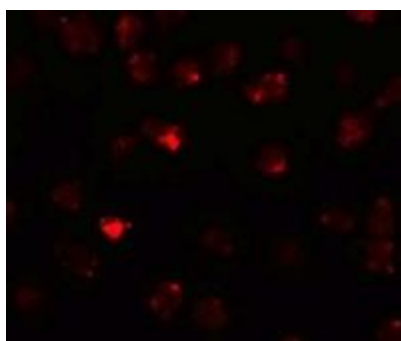


[View online »](#)

Product images:



Western blot analysis of PIWI-L3 in 3T3 cell lysate with PIWI-L3 antibody at 1 ug/mL in (A) the absence and (B) the presence of blocking peptide.



Immunofluorescence of PIWI-L3 in 3T3 cells with PIWI-L3 antibody at 20 ug/mL.