

Product datasheet for **TA320189**

DBX2 Rabbit Polyclonal Antibody

Product data:

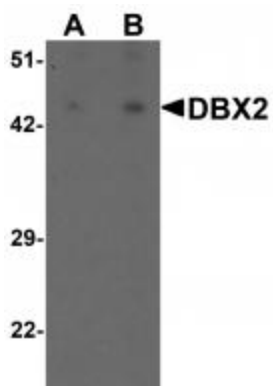
| | |
|-----------------------|--|
| Product Type: | Primary Antibodies |
| Applications: | IF, IHC, WB |
| Recommended Dilution: | WB: 1 - 2 ug/mL, ICC: 5 ug/mL, IF: 5 ug/mL |
| Reactivity: | Human |
| Host: | Rabbit |
| Isotype: | IgG |
| Clonality: | Polyclonal |
| Immunogen: | DBX2 antibody was raised against a 16 amino acid synthetic peptide near the amino terminus of human DBX2. |
| Formulation: | DBX2 Antibody is supplied in PBS containing 0.02% sodium azide. |
| Concentration: | 1ug/ul |
| Purification: | DBX2 Antibody is affinity chromatography purified via peptide column. |
| Conjugation: | Unconjugated |
| Storage: | Store at -20°C as received. |
| Stability: | Stable for 12 months from date of receipt. |
| Gene Name: | developing brain homeobox 2 |
| Database Link: | NP_001004329 Entrez Gene 440097 Human Q6ZNG2 |
| Background: | DBX2 Antibody: DBX2 is a member of the developing brain homeobox (DBX) protein family, but while the related protein DBX1 is expressed in various regions of the developing brain, DBX2 shows a more restricted pattern of expression in the brain, and is also expressed in some mesenchymal cells such as limb buds and tooth germs. It is thought that DBX1 and DBX2 promote the development of a subset of interneurons, some of which help mediate left-right coordination of locomotor activity. In Xenopus, DBX2 is involved in primary neurogenesis and early neural plate patterning, and is thought to act as a cross-repressive partner of NKX6-2 in the patterning of the ventral neural tube. |
| Synonyms: | FLJ16139 |



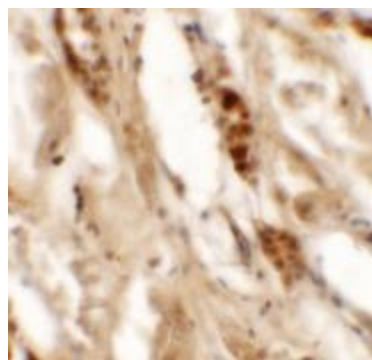
[View online »](#)

Protein Families: ES Cell Differentiation/IPS

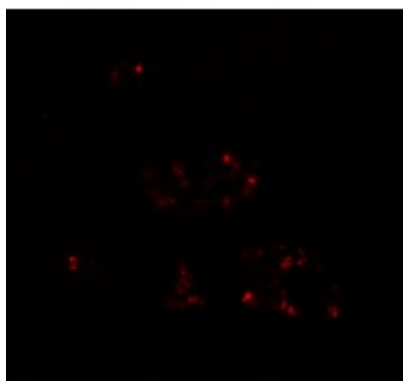
Product images:



Western blot analysis of DBX2 in human kidney tissue lysate with DBX2 antibody at (A) 1 and (B) 2 ug/mL.



Immunohistochemistry of DBX2 in human kidney tissue with DBX2 antibody at 5 ug/mL.



Immunofluorescence of DBX2 in human kidney tissue with DBX2 antibody at 20 ug/mL.