

Product datasheet for **TA320187**

MFSD2B Rabbit Polyclonal Antibody

Product data:

Product Type:	Primary Antibodies
Applications:	WB
Recommended Dilution:	WB: 1 - 2 ug/mL
Reactivity:	Human, Rat
Host:	Rabbit
Isotype:	IgG
Clonality:	Polyclonal
Immunogen:	MFSD2B antibody was raised against a 15 amino acid synthetic peptide near the center of human MFSD2B.
Formulation:	MFSD2B Antibody is supplied in PBS containing 0.02% sodium azide.
Concentration:	1ug/ul
Purification:	MFSD2B Antibody is affinity chromatography purified via peptide column.
Conjugation:	Unconjugated
Storage:	Store at -20°C as received.
Stability:	Stable for 12 months from date of receipt.
Gene Name:	major facilitator superfamily domain containing 2B
Database Link:	NP_001073942 Entrez Gene 500624 Rat Entrez Gene 388931 Human A6NFX1



[View online »](#)

Background:

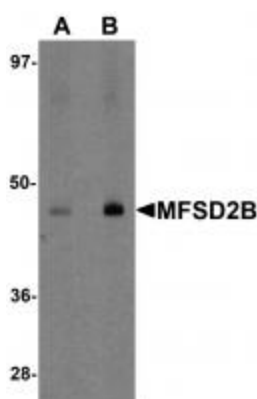
MFSD2B Antibody: Multidrug transporters, such as MFSD2B, are membrane proteins that expel a wide spectrum of cytotoxic compounds from the cell and render cells resistant to multiple drugs. Major Facilitator Superfamily (MFS) members are capable of transporting various substrates such as sugars, polyols, drugs, neurotransmitters, amino acids, peptides, and inorganic anions, although most members are substrate-specific. MFSD2B is closely related to MFSD2A, which is expressed in many tissues and is highly induced in liver and brown adipose tissue (BAT) during fasting, playing a major role in the induction of MFSD2A expression during adaptive thermogenesis. Unlike MFSD2A, MFSD2B is expressed in few tissues and at relatively low levels, and is not induced during fasting, suggesting that MFSD2B may play other roles.

Synonyms:

Gm1964

Protein Families:

Transmembrane

Product images:


Western blot analysis of MFSD2B in rat lung tissue lysate with MFSD2B antibody at (A) 1 and (B) 2 ug/mL.