

Product datasheet for **TA320186**

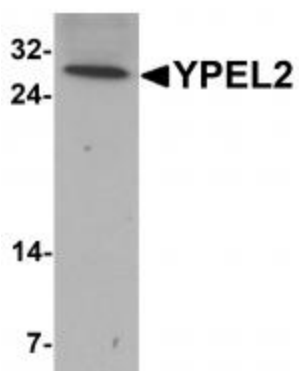
YPEL2 Rabbit Polyclonal Antibody

Product data:

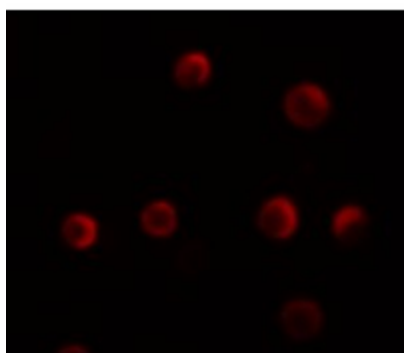
Product Type:	Primary Antibodies
Applications:	IF, WB
Recommended Dilution:	WB: 1 ug/mL, IF: 5 ug/mL
Reactivity:	Human, Mouse
Host:	Rabbit
Isotype:	IgG
Clonality:	Polyclonal
Immunogen:	YPEL2 antibody was raised against a 17 amino acid synthetic peptide near the amino terminus of human YPEL2.
Formulation:	YPEL2 Antibody is supplied in PBS containing 0.02% sodium azide.
Concentration:	1ug/ul
Purification:	YPEL2 Antibody is affinity chromatography purified via peptide column.
Conjugation:	Unconjugated
Storage:	Store at -20°C as received.
Stability:	Stable for 12 months from date of receipt.
Gene Name:	yippee like 2
Database Link:	NP_001005404 Entrez Gene 77864 Mouse Entrez Gene 388403 Human Q96QA6
Background:	YPEL2 Antibody: YPEL2 (yippee-like 2) belongs to a family of five yippee-like proteins, all of which localize to the centrosome or mitotic spindle and are widely expressed in both adult and fetal tissue. This localization plus the fact that the family of human YPEL proteins share a high degree of sequence homology across species suggests that these proteins may have a conserved function involved in cell division. YPEL2 might be an important factor during the development and malignant transformation of tissues, most notably pancreatic and breast tumors.
Synonyms:	FKSG4



[View online »](#)

Product images:

Western blot analysis of YPEL2 in HeLa cell lysate with YPEL2 antibody at 1 ug/mL.



Immunofluorescence of YPEL2 in HeLa cells with YPEL2 antibody at 5 ug/mL.



Immunocytochemistry of YPEL2 in HeLa cells with YPEL2 antibody at 2.5 ug/mL.