

Product datasheet for **TA320185**

CLEC2A Rabbit Polyclonal Antibody

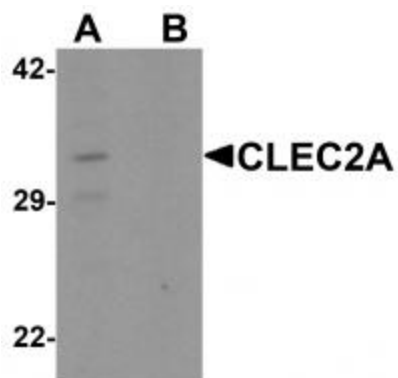
Product data:

Product Type:	Primary Antibodies
Applications:	IF, WB
Recommended Dilution:	WB: 1 ug/mL, IF: 20 ug/mL
Reactivity:	Human
Host:	Rabbit
Isotype:	IgG
Clonality:	Polyclonal
Immunogen:	CLEC2A antibody was raised against a 16 amino acid synthetic peptide near the amino terminus of human CLEC2A.
Formulation:	CLEC2A Antibody is supplied in PBS containing 0.02% sodium azide.
Concentration:	1ug/ul
Purification:	CLEC2A Antibody is affinity chromatography purified via peptide column.
Conjugation:	Unconjugated
Storage:	Store at -20°C as received.
Stability:	Stable for 12 months from date of receipt.
Gene Name:	C-type lectin domain family 2 member A
Database Link:	NP_001124183 Entrez Gene 387836 Human Q6UWV9
Background:	CLEC2A Antibody: CLEC2A (C-type lectin domain family 2 member A), also known as PILAR (proliferation-induced lymphocyte-associated receptor) is involved in modulating T-cell expansion. It is a 32 kDa single-pass type II membrane protein that contains one C-type lectin domain in its extracellular region and belongs to the CTL/CTLD superfamily. CLEC2A is mainly expressed in skin and highly expressed in CD8(+), B lymphocytes and naive CD4(+) T cells. Manipulation of CLEC2A signaling may be important for treatment of autoimmune diseases and cancer.
Synonyms:	INPE5792; KACL; PILAR; UNQ5792

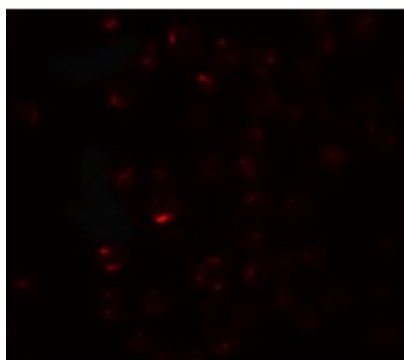


[View online »](#)

Product images:



Western blot analysis of CLEC2A in K562 cell lysate with CLEC2A antibody at 1 ug/ml in (A) the absence and (B) the presence of blocking peptide.



Immunofluorescence of CLEC2A in K562 cells with CLEC2A antibody at 20 ug/mL.