

Product datasheet for **TA320184**

C6ORF173 (CENPW) Rabbit Polyclonal Antibody

Product data:

Product Type:	Primary Antibodies
Applications:	WB
Recommended Dilution:	WB: 0.5 - 1 ug/mL
Reactivity:	Human, Mouse, Rat
Host:	Rabbit
Isotype:	IgG
Clonality:	Polyclonal
Immunogen:	CENPW antibody was raised against a 16 amino acid synthetic peptide near the amino terminus of human CENPW.
Formulation:	CENPW Antibody is supplied in PBS containing 0.02% sodium azide.
Concentration:	1ug/ul
Purification:	CENPW Antibody is affinity chromatography purified via peptide column.
Conjugation:	Unconjugated
Storage:	Store at -20°C as received.
Stability:	Stable for 12 months from date of receipt.
Predicted Protein Size:	9.9 kDa
Gene Name:	centromere protein W
Database Link:	NP_001012525 Entrez Gene 66311 MouseEntrez Gene 689399 RatEntrez Gene 387103 Human Q5EE01



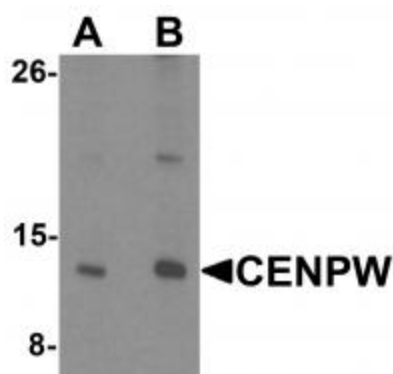
[View online »](#)

Background:

CENPW Antibody: CENPW was initially identified as a gene that was upregulated in multiple cancers, and whose overexpression in mouse fibroblast cells gave rise to distinct cancer-specific phenotypes. It was later found to be a nuclear protein that associated with CENPT, a component of CENPA nucleosome complex in the centromere, and is required for proper kinetochore function. CENPW also specifically interacts with the nucleolar phosphoprotein nucleophosmin, also known as B23. It has been suggested that nucleophosmin functions in the assembly of the kinetochore by interacting with CENPW during interphase. Overexpression of CENPW in the SKOV-3 human ovarian cancer cell line as well as in the zebrafish embryo led to apoptosis, suggesting that high levels of CENPW induces apoptotic cell death.

Synonyms:

C6orf173; CENP-W; CUG2

Product images:

Western blot analysis of CENPW in HeLa cell lysate with CENPW antibody at (A) 0.5 and (B) 1 $\mu\text{g}/\text{mL}$.