

Product datasheet for **TA320182**

C1orf187 (DRAXIN) Rabbit Polyclonal Antibody

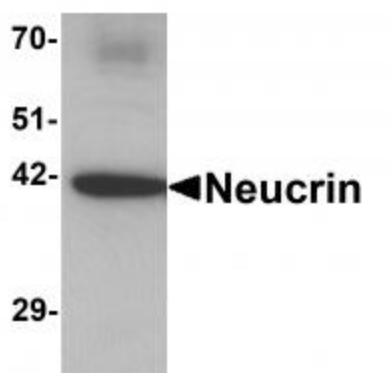
Product data:

Product Type:	Primary Antibodies
Applications:	IF, IHC, WB
Recommended Dilution:	WB: 1 ug/mL, ICC: 5 ug/mL, IF: 20 ug/mL
Reactivity:	Human, Mouse, Rat
Host:	Rabbit
Isotype:	IgG
Clonality:	Polyclonal
Immunogen:	Neucrin antibody was raised against a 17 amino acid synthetic peptide near the carboxy terminus of human Neucrin.
Formulation:	NEUCRIN Antibody is supplied in PBS containing 0.02% sodium azide.
Concentration:	1ug/ul
Purification:	NEUCRIN Antibody is affinity chromatography purified via peptide column.
Conjugation:	Unconjugated
Storage:	Store at -20°C as received.
Stability:	Stable for 12 months from date of receipt.
Gene Name:	dorsal inhibitory axon guidance protein
Database Link:	BAG80561 Entrez Gene 374946 Human Q8NBI3
Background:	NEUCRIN Antibody: Neucrin, also known as Draxin, is a repulsive guidance protein for the spinal cord and forebrain commissures. It is thought to act as an antagonist of canonical Wnt signaling by inhibiting the stabilization of cytosolic beta-catenin. Ectopically expressed neucrin inhibited growth or caused misrouting of chick spinal cord commissural axons in vivo while Neucrin-null mice showed defasciculation of spinal cord commissural axons and an absence of all forebrain commissures. Other experiments in mice have shown that olfactory bulb axonal outgrowth is inhibited by Neucrin, suggesting that Neucrin functions as an inhibitory guidance cue for olfactory bulb axons.
Synonyms:	AGPA3119; C1orf187; neucrin; UNQ3119

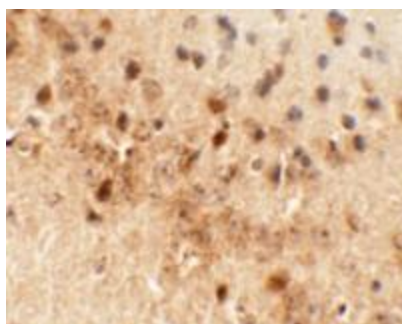


[View online »](#)

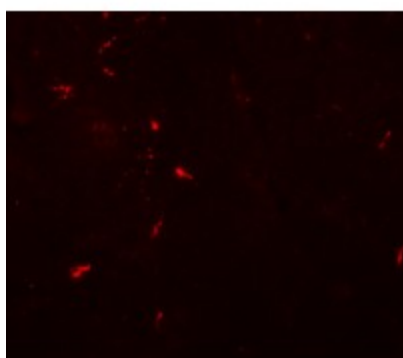
Product images:



Western blot analysis of Neucrin in rat cerebellum tissue lysate with Neucrin antibody at 1 ug/mL.



Immunohistochemistry of NEUCRIN in mouse brain tissue with NEUCRIN antibody at 5 ug/mL.



Immunofluorescence of NEUCRIN in mouse brain tissue with NEUCRIN antibody at 20 ug/mL.