

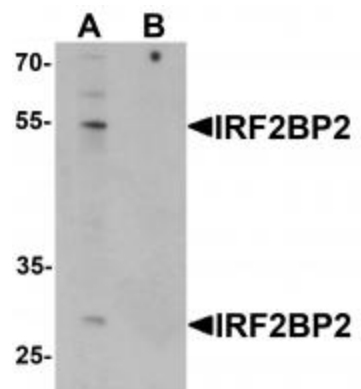
Product datasheet for TA320180

IRF2BP2 Rabbit Polyclonal Antibody

Product data:

Product Type:	Primary Antibodies
Applications:	IF, WB
Recommended Dilution:	WB: 1 ug/mL
Reactivity:	Human, Mouse
Host:	Rabbit
Isotype:	IgG
Clonality:	Polyclonal
Immunogen:	IRF2BP2 antibody was raised against an 18 amino acid synthetic peptide near the carboxy terminus of human IRF2BP2.
Formulation:	IRF2BP2 Antibody is supplied in PBS containing 0.02% sodium azide.
Concentration:	1ug/ul
Purification:	IRF2BP2 Antibody is affinity chromatography purified via peptide column.
Conjugation:	Unconjugated
Storage:	Store at -20°C as received.
Stability:	Stable for 12 months from date of receipt.
Gene Name:	interferon regulatory factor 2 binding protein 2
Database Link:	NP_892017 Entrez Gene 270110 Mouse Entrez Gene 359948 Human Q7Z5L9
Background:	IRF2BP2 Antibody: IRF2BP2, like the related protein IRF2BP1, is a co-repressor that interacts specifically with the C-terminal repression domain of Interferon Regulatory Factor 2 (IRF2). IRF2BP2 is a direct target gene of p53 and is involved in cell survival during the p53 stress response, able to impede the p53-mediated transactivation of p21 and Bax. IRF2BP2 is also a co-factor of VGLL4 and is required to induce the expression of vascular endothelial growth factor A (VEGF-A) in muscle. It is normally found in the nucleus of skeletal muscle and cardiac cells, but can be found in the cytoplasm during skeletal muscle differentiation.
Synonyms:	MGC72189
Protein Families:	Druggable Genome


[View online »](#)

Product images:


Western blot analysis of IRF2BP2 in HeLa cell lysate with IRF2BP2 antibody at 1 ug/mL in (A) the absence and (B) the presence of blocking peptide



Immunocytochemistry of IRF2BP2 in A20 cells with IRF2BP2 antibody at 2.5 ug/mL.