

Product datasheet for **TA320179**

RILPL1 Rabbit Polyclonal Antibody

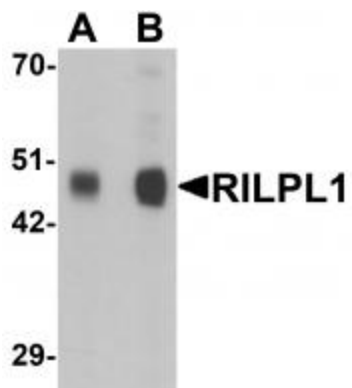
Product data:

Product Type:	Primary Antibodies
Applications:	IF, WB
Recommended Dilution:	WB: 0.5 and 1 ug/mL, IF: 20 ug/mL
Reactivity:	Human, Mouse, Rat
Host:	Rabbit
Isotype:	IgG
Clonality:	Polyclonal
Immunogen:	RILPL1 antibody was raised against a 17 amino acid synthetic peptide near the amino terminus of human RILPL1.
Formulation:	RILPL1 Antibody is supplied in PBS containing 0.02% sodium azide.
Concentration:	1ug/ul
Purification:	RILPL1 Antibody is affinity chromatography purified via peptide column.
Conjugation:	Unconjugated
Storage:	Store at -20°C as received.
Stability:	Stable for 12 months from date of receipt.
Gene Name:	Rab interacting lysosomal protein-like 1
Database Link:	AAH89444 Entrez Gene 353116 Human Q5EBL4
Background:	RILPL1 Antibody: While the function of the Rab interacting lysosomal protein-like 1 (RILPL1) remains unknown, the homologous protein RILP is a small GTPase that controls transport to endocytic compartments, suggesting RILPL1 may have similar functions. However, overexpression of RILP caused enlarged lysosomes that are more centrally located in the cell, while overexpression of RILPL1 had no visible effect on the location or morphology of lysosomes.
Synonyms:	GOSPEL; RLP1

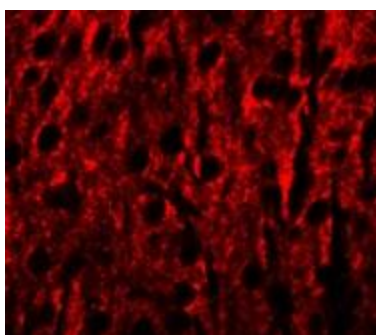


[View online »](#)

Product images:



Western blot analysis of RILPL1 in rat cerebellum tissue lysate with RILPL1 antibody at (A) 0.5 and (B) 1 ug/mL.



Immunofluorescence of RILPL1 in mouse brain cells with RILPL1 antibody at 20 ug/mL.