

## Product datasheet for **TA320178**

### RTN4RL2 Rabbit Polyclonal Antibody

#### Product data:

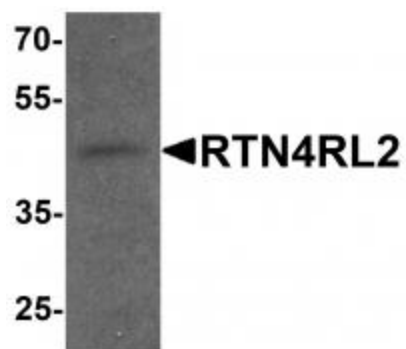
Product Type:	Primary Antibodies
Applications:	WB
Recommended Dilution:	WB: 1 - 2 ug/mL
Reactivity:	Human
Host:	Rabbit
Isotype:	IgG
Clonality:	Polyclonal
Immunogen:	Rabbit polyclonal RTN4RL2 antibody was raised against an 18 amino acid peptide near the carboxy terminus of human RTN4RL2.
Formulation:	RTN4RL2 Antibody is supplied in PBS containing 0.02% sodium azide.
Concentration:	1ug/ul
Purification:	RTN4RL2 Antibody is affinity chromatography purified via peptide column.
Conjugation:	Unconjugated
Storage:	Store at -20°C as received.
Stability:	Stable for 12 months from date of receipt.
Predicted Protein Size:	46 kDa
Gene Name:	reticulon 4 receptor-like 2
Database Link:	<a href="#">NP_848665</a> <a href="#">Entrez Gene 349667 Human</a> <a href="#">Q86UN3</a>
Background:	RTN4RL2 Antibody: Reticulon 4 receptor-like 2 (RTN4RL2), also known as NgR2 and NgRH1, is a 60 kDa glycosylphosphatidylinositol-anchored protein that is expressed primarily in the brain. It contains eight leucine-rich repeats that are flanked by cysteine-rich sequences at both the N- and C-termini. The membrane anchored RTN4RL2 can be solubilized through the action of phospholipase or an unidentified MTMMP to generate a 46 kDa soluble receptor. It has been suggested that RTN4RL2 may play a role in regulating axonal regeneration and plasticity in the adult central nervous system.
Synonyms:	NgR2; NGRH1



[View online »](#)

Protein Families: Druggable Genome

### Product images:



Western blot analysis of RTN4RL2 in rat brain tissue lysate with RTN4RL2 antibody at 1 ug/mL.