

Product datasheet for **TA320176**

LRRTM1 Rabbit Polyclonal Antibody

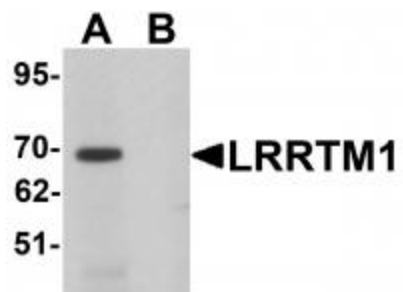
Product data:

| | |
|-----------------------|--------------------------------------------------------------------------------------------------------------------------------------------------------------------------------------------------------------------------------------------------------------------------------------------------------------------------------------------------------------------------------------------------------------------------------------------------------------------------------------------------------------------------------------------------------------------------------------------------------------------------------------|
| Product Type: | Primary Antibodies |
| Applications: | IF, IHC, WB |
| Recommended Dilution: | WB: 1 ug/mL, ICC: 5 ug/mL, IF: 20 ug/mL |
| Reactivity: | Human, Mouse, Rat |
| Host: | Rabbit |
| Isotype: | IgG |
| Clonality: | Polyclonal |
| Immunogen: | LRRTM1 antibody was raised against a 17 amino acid synthetic peptide near the carboxy terminus of human LRRTM1. |
| Formulation: | LRRTM1 Antibody is supplied in PBS containing 0.02% sodium azide. |
| Concentration: | 1ug/ul |
| Purification: | LRRTM1 Antibody is affinity chromatography purified via peptide column. |
| Conjugation: | Unconjugated |
| Storage: | Store at -20°C as received. |
| Stability: | Stable for 12 months from date of receipt. |
| Gene Name: | leucine rich repeat transmembrane neuronal 1 |
| Database Link: | AAH45113 Entrez Gene 347730 Human Q86UE6 |
| Background: | LRRTM1 Antibody: The Leucine-rich repeat transmembrane neuronal proteins (LRRTMs) are differentially expressed in the nervous system and were recently found to instruct presynaptic and mediate postsynaptic glutamatergic differentiation, with LRRTM1 and LRRTM2 most potent at inducing presynaptic differentiation. Each LRRTM protein is a type I transmembrane containing ten extracellular leucine-rich repeats and a short intracellular tail and has a developmentally regulated pattern distinct from all others. LRRTM1 is a maternally suppressed gene that is associated paternally with handedness and schizophrenia. |
| Synonyms: | FLJ32082 |

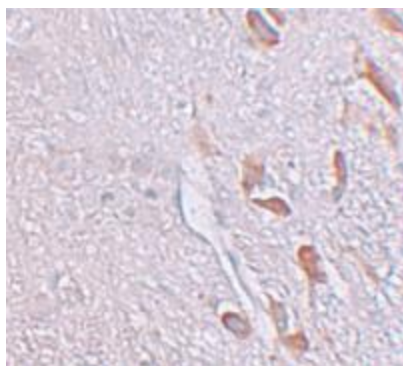


[View online »](#)

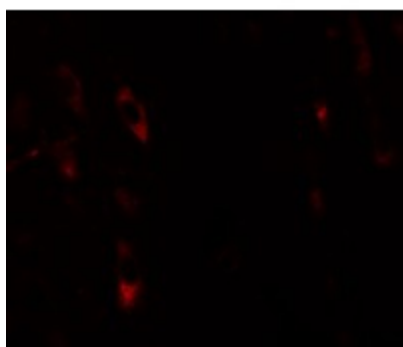
Product images:



Western blot analysis of LRRTM1 in mouse brain tissue lysate with LRRTM1 antibody at 1 ug/mL in (A) the absence and (B) the presence of blocking peptide.



Immunohistochemistry of LRRTM1 in human brain tissue with LRRTM1 antibody at 5 ug/mL.



Immunofluorescence of LRRTM1 in human brain tissue with LRRTM1 antibody at 20 ug/mL.