

## Product datasheet for **TA320172**

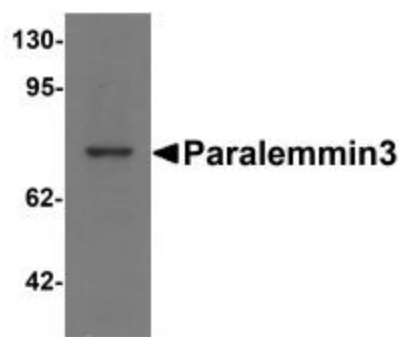
### **PALM3 Rabbit Polyclonal Antibody**

#### **Product data:**

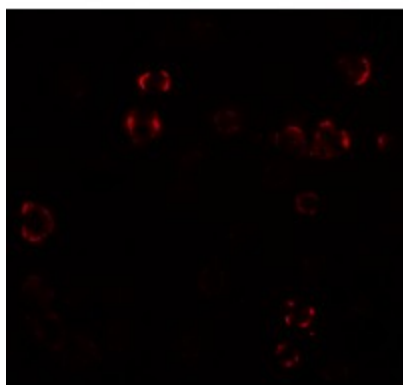
Product Type:	Primary Antibodies
Applications:	IF, WB
Recommended Dilution:	WB: 1 ug/mL, ICC: 5 ug/mL, IF: 20 ug/mL
Reactivity:	Human
Host:	Rabbit
Isotype:	IgG
Clonality:	Polyclonal
Immunogen:	Paralemmin3 antibody was raised against a 19 amino acid synthetic peptide near the amino terminus of human Paralemmin3.
Formulation:	Paralemmin3 Antibody is supplied in PBS containing 0.02% sodium azide.
Concentration:	1ug/ul
Purification:	Paralemmin3 Antibody is affinity chromatography purified via peptide column.
Conjugation:	Unconjugated
Storage:	Store at -20°C as received.
Stability:	Stable for 12 months from date of receipt.
Gene Name:	paralemmin 3
Database Link:	<a href="#">NP_001138500</a> <a href="#">Entrez Gene 342979 Human</a> <a href="#">A6NDB9</a>
Background:	Paralemmin3 Antibody: Paralemmin3 is a recently identified protein that associates with the single immunoglobulin IL-1 receptor-related molecule (SIGIRR), a negative regulator of Toll-like receptor-interleukin 1 receptor signaling. Silencing of Paralemmin3 expression by RNAi inhibited the release of inflammatory cytokines in A549 cells after stimulation with lipopolysaccharide (LPS), suggesting Paralemmin3 may function as an adaptor in the LPS-TLR4 signaling pathway.
Synonyms:	PALM3


[View online »](#)

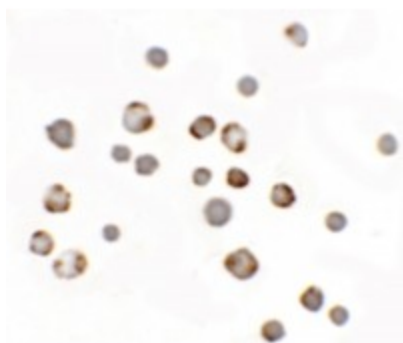
## Product images:



Western blot analysis of Paralemmin3 in MCF7 cell lysate with Paralemmin3 antibody at 1 ug/mL.



Immunofluorescence of Paralemmin 3 in MCF7 cells with Paralemmin 3 antibody at 20 ug/mL.



Immunocytochemistry of Paralemmin 3 in MCF7 cells with Paralemmin 3 antibody at 5 ug/mL.