

Product datasheet for **TA320171**

FREM2 Rabbit Polyclonal Antibody

Product data:

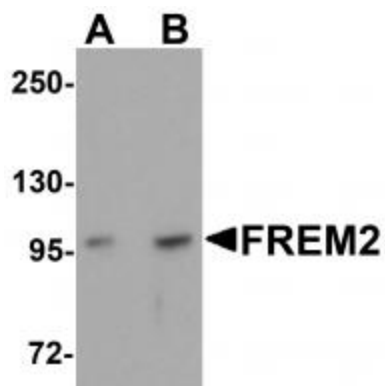
Product Type:	Primary Antibodies
Applications:	IF, WB
Recommended Dilution:	ICC: 20 ug/mL, IF: 20 ug/mL
Reactivity:	Human, Mouse
Host:	Rabbit
Isotype:	IgG
Clonality:	Polyclonal
Immunogen:	FREM2 antibody was raised against a 19 amino acid synthetic peptide near the center of human FREM2.
Formulation:	FREM2 Antibody is supplied in PBS containing 0.02% sodium azide.
Concentration:	1ug/ul
Purification:	FREM2 Antibody is affinity chromatography purified via peptide column.
Conjugation:	Unconjugated
Storage:	Store at -20°C as received.
Stability:	Stable for 12 months from date of receipt.
Gene Name:	FRAS1 related extracellular matrix protein 2
Database Link:	NP_997244 Entrez Gene 242022 Mouse Entrez Gene 341640 Human Q5SZK8
Background:	FREM2 Antibody: FREM2 is a member of the FRAS1-related extracellular matrix protein family and like FREM1, mutations in the FREM2 gene are associated with Fraser syndrome. FREM2 localizes to the basement membrane, forming a ternary complex that plays a role in epidermal-dermal interactions during morphogenetic processes and is thought to be required for maintaining the integrity of the skin epithelium and the differentiated state of renal epithelia. The FREM2 gene is one of several genes whose transcription is affected by TFAP2C, a transcription factor involved in mammary development, differentiation, and oncogenesis.
Synonyms:	DKFZp686J0811; DKFZp781I048; KIAA1074



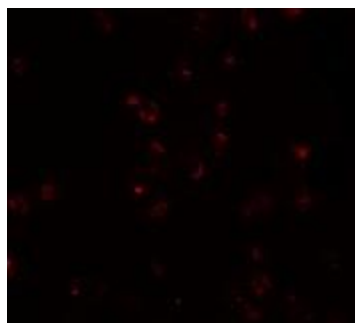
[View online »](#)

Protein Families: Transmembrane

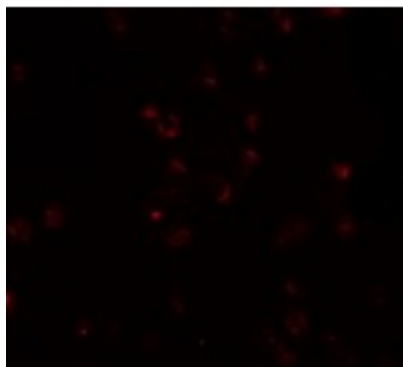
Product images:



Western blot analysis of FREM2 in A-20 cell lysate with FREM2 antibody at (A) 0.5 and (B) 1 ug/mL.



Immunocytochemistry of FREM2 in A-20 cells with FREM2 antibody at 20 ug/mL.



Immunofluorescence of FREM2 in A20 cells with FREM2 antibody at 20 ug/mL.