

Product datasheet for **TA320169**

TMPRSS11A Chicken Polyclonal Antibody

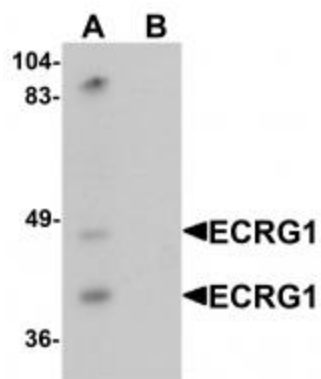
Product data:

Product Type:	Primary Antibodies
Applications:	WB
Recommended Dilution:	WB: 1 ug/mL
Reactivity:	Human, Mouse, Rat
Host:	Chicken
Isotype:	IgY
Clonality:	Polyclonal
Immunogen:	ECRG1 antibody was raised against a 16 amino acid synthetic peptide near the carboxy terminus of human ECRG1.
Formulation:	ECRG1 Antibody is supplied in PBS containing 0.02% sodium azide.
Concentration:	1ug/ul
Purification:	ECRG1 Antibody is affinity chromatography purified via peptide column.
Conjugation:	Unconjugated
Storage:	Store at -20°C as received.
Stability:	Stable for 12 months from date of receipt.
Gene Name:	transmembrane protease, serine 11A
Database Link:	NP_872412 Entrez Gene 194597 Mouse Entrez Gene 686581 Rat Entrez Gene 339967 Human Q6ZMR5
Background:	ECRG1 Antibody: Epidermal type-II transmembrane serine protease (ECRG1), also known as TMPRSS11A, is a member of a novel esophageal cancer-related gene family. It is a type-II transmembrane serine protease which may play a role in cellular senescence. It is expressed in esophagus, liver, colon and lung. Overexpression of ECRG1 inhibits cell growth and induces G1 cell cycle arrest. It is down-regulated in esophagus cancers (EC) and might play important roles in the initiation and progression of EC.
Synonyms:	ECRG1
Protein Families:	Druggable Genome, Transmembrane



[View online »](#)

Product images:



Western blot analysis of ECRG1 in mouse liver tissue lysate with ECRG1 antibody at 1 ug/mL in (A) the absence and (B) the presence of blocking peptide.