

Product datasheet for **TA320167**

NLRP10 Rabbit Polyclonal Antibody

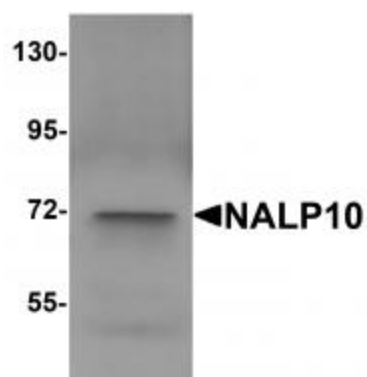
Product data:

Product Type:	Primary Antibodies
Applications:	IF, IHC, WB
Recommended Dilution:	WB: 1 ug/mL, ICC: 10 ug/mL, IF: 20 ug/mL
Reactivity:	Human
Host:	Rabbit
Isotype:	IgG
Clonality:	Polyclonal
Immunogen:	NALP10 antibody was raised against a 14 amino acid synthetic peptide near the amino terminus of human NALP10.
Formulation:	NALP10 Antibody is supplied in PBS containing 0.02% sodium azide.
Concentration:	1ug/ul
Purification:	NALP10 Antibody is affinity chromatography purified via peptide column.
Conjugation:	Unconjugated
Storage:	Store at -20°C as received.
Stability:	Stable for 12 months from date of receipt.
Gene Name:	NLR family, pyrin domain containing 10
Database Link:	NP_789791 Entrez Gene 338322 Human Q86W26
Background:	NALP10 Antibody: NALP proteins are cytoplasmic proteins that form a subfamily within the larger CATERPILLER family and are thought to play a crucial role in cell proliferation and reproduction. Like all other NALP family members, NALP10 has a C-terminal leucine-rich repeat (LRR) region, an N-terminal Pyrin domain (PYD) followed by a NACHT domain, and a NACHT-associated domain. It was initially identified as PYNOD, an Apaf-1-like protein that binds to ASC, caspase-1 and IL-1 β , inhibiting the autoprocessing of caspase-1, caspase-1-mediated IL-1 β processing, and ASC aggregation. NALP10 is thus a potent regulator of apoptosis and inflammation.
Synonyms:	CLR11.1; NALP10; NOD8; PAN5; PYNOD

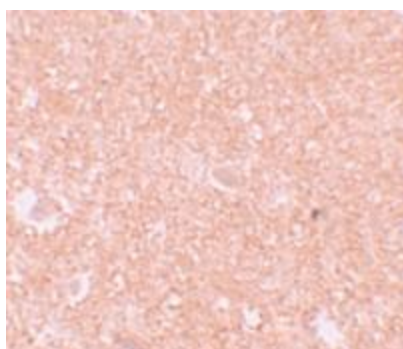


[View online »](#)

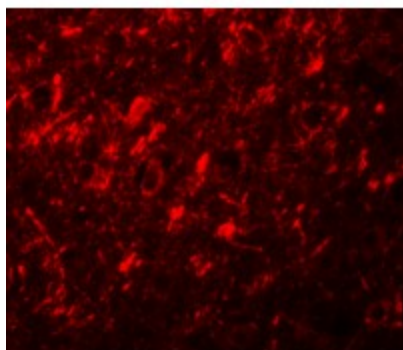
Product images:



Western blot analysis of NALP10 in human brain tissue lysate with NALP10 antibody at 1 ug/mL.



Immunohistochemistry of NALP10 in human brain tissue with NALP10 antibody at 10 ug/mL.



Immunofluorescence of NALP10 in human brain tissue with NALP10 antibody at 20 ug/mL.