

Product datasheet for **TA320166**

NLRP9 Rabbit Polyclonal Antibody

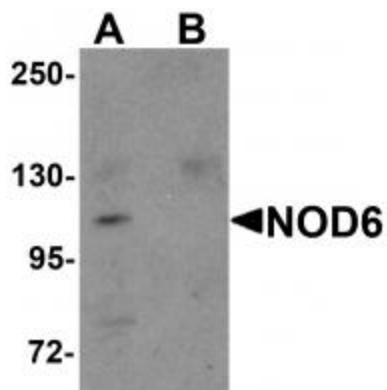
Product data:

Product Type:	Primary Antibodies
Applications:	IF, IHC, WB
Recommended Dilution:	WB: 1 ug/mL, ICC: 10 ug/mL, IF: 20 ug/mL
Reactivity:	Human, Mouse
Host:	Rabbit
Isotype:	IgG
Clonality:	Polyclonal
Immunogen:	NOD6 antibody was raised against a 14 amino acid synthetic peptide near the amino terminus of human NOD6.
Formulation:	NOD6 Antibody is supplied in PBS containing 0.02% sodium azide.
Concentration:	1ug/ul
Purification:	NOD6 Antibody is affinity chromatography purified via peptide column.
Conjugation:	Unconjugated
Storage:	Store at -20°C as received.
Stability:	Stable for 12 months from date of receipt.
Gene Name:	NLR family, pyrin domain containing 9
Database Link:	NP_789790 Entrez Gene 338321 Human Q7RTR0
Background:	NOD6 Antibody: NOD6, also known as NALP9, is a member of the NALP family, a group of proteins that typically contain a NACHT domain, a NACHT-associated domain (NAD), a C-terminal leucine-rich repeat (LRR) region, and an N-terminal pyrin domain (PYD) and are involved in inflammation and innate immune defense. The bovine NOD6, which has 76% homology to its human counterpart, has been suggested to be an oocyte marker gene. In adult tissues, NALP9 mRNA is expressed exclusively in ovary and testis.
Synonyms:	CLR19.1; NALP9; NOD6; PAN12

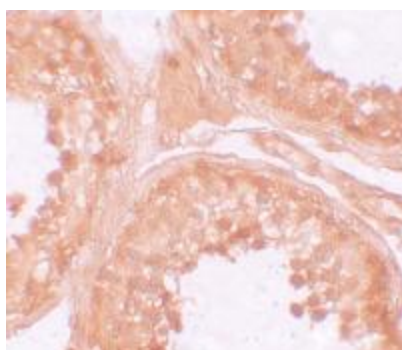


[View online »](#)

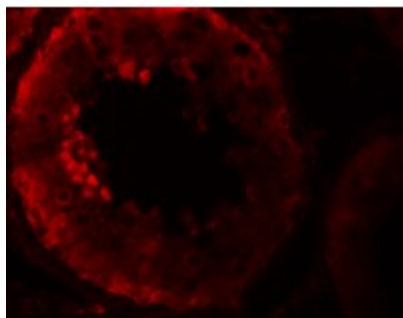
Product images:



Western blot analysis of NOD6 in EL4 cell lysate with NOD6 antibody at 1 ug/mL in the (A) absence and (B) presence of blocking peptide.



Immunohistochemistry of NOD6 in human testis tissue with NOD6 antibody at 10 ug/mL.



Immunofluorescence of NOD6 in human testis tissue with NOD6 antibody at 20 ug/mL.