

## Product datasheet for **TA320164**

### **NSE2 (NSMCE2) Rabbit Polyclonal Antibody**

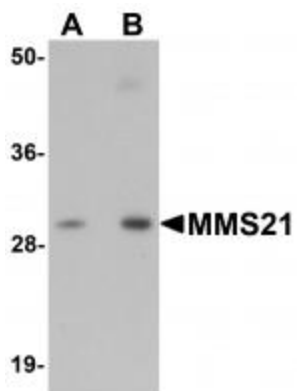
#### **Product data:**

<b>Product Type:</b>	Primary Antibodies
<b>Applications:</b>	WB
<b>Recommended Dilution:</b>	WB: 0.5 - 1 ug/mL
<b>Reactivity:</b>	Human, Mouse, Rat
<b>Host:</b>	Rabbit
<b>Isotype:</b>	IgG
<b>Clonality:</b>	Polyclonal
<b>Immunogen:</b>	MMS21 antibody was raised against a 15 amino acid synthetic peptide near the carboxy terminus of human MMS21.
<b>Formulation:</b>	MMS21 Antibody is supplied in PBS containing 0.02% sodium azide.
<b>Concentration:</b>	1ug/ul
<b>Purification:</b>	MMS21 Antibody is affinity chromatography purified via peptide column.
<b>Conjugation:</b>	Unconjugated
<b>Storage:</b>	Store at -20°C as received.
<b>Stability:</b>	Stable for 12 months from date of receipt.
<b>Gene Name:</b>	NSE2/MMS21 homolog, SMC5-SMC6 complex SUMO ligase
<b>Database Link:</b>	<a href="#">NP_775956</a> <a href="#">Entrez Gene 68501 Mouse</a> <a href="#">Entrez Gene 299957 Rat</a> <a href="#">Entrez Gene 286053 Human</a> <a href="#">Q96MF7</a>
<b>Background:</b>	MMS21 Antibody: MMS21, also known as NSE2, is a SUMO ligase that in combination with the SMC5/6 complex is required for the prevention of DNA damage induced apoptosis by facilitating DNA repair in human cells. MMS21-dependent sumoylation is integral and important to the cohesion mechanism and mitotic progression; this function appears to be independent of SMC6. MMS21 mediates SUMO attachment to various proteins such as SMC6L1 and TRAX, and possibly the cohesin components RAD21 and STAG2.
<b>Synonyms:</b>	C8orf36; MMS21; NSE2; ZMIZ7



[View online »](#)

## Product images:



Western blot analysis of MMS21 in 293 cell lysate with MMS21 antibody at (A) 0.5 and (B) 1 ug/mL.