

## Product datasheet for **TA320162**

### CCDC141 Rabbit Polyclonal Antibody

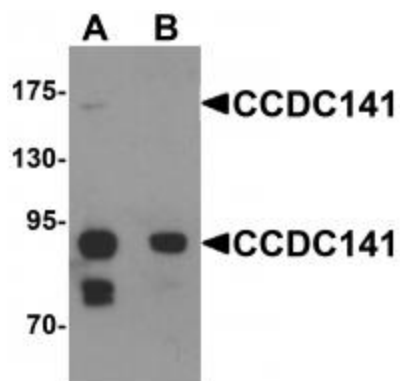
#### Product data:

|                       |  |
|-----------------------|--|
| Product Type:         | Primary Antibodies   |
| Applications:         | IF, IHC, WB  |
| Recommended Dilution: | WB: 1 ug/mL, ICC: 5 ug/mL, IF: 20 ug/mL  |
| Reactivity:           | Human, Mouse   |
| Host:                 | Rabbit   |
| Isotype:              | IgG  |
| Clonality:            | Polyclonal   |
| Immunogen:            | CCDC141 antibody was raised against an 18 amino acid synthetic peptide near the amino terminus of human CCDC141.   |
| Formulation:          | CCDC141 Antibody is supplied in PBS containing 0.02% sodium azide.   |
| Concentration:        | 1ug/ul   |
| Purification:         | CCDC141 Antibody is affinity chromatography purified via peptide column.   |
| Conjugation:          | Unconjugated   |
| Storage:              | Store at -20°C as received.  |
| Stability:            | Stable for 12 months from date of receipt.   |
| Gene Name:            | coiled-coil domain containing 141  |
| Database Link:        | <a href="#">NP_775919</a><br><a href="#">Entrez Gene 545428 Mouse</a> <a href="#">Entrez Gene 285025 Human</a><br><a href="#">Q6ZP82</a>   |
| Background:           | CCDC141 Antibody: Coiled-coil domain-containing protein 141 (CCDC141), also known as CAMDI, is a recently identified disrupted in schizophrenia 1 (DISC1)-binding protein that also associates with myosin II. CCDC141 preferentially associates with phosphomyosin II and causes an accumulation of phosphomyosin II at the centrosome in a DISC1-dependent manner. Knockdown of CCDC141 expression by RNAi led to severely impaired radial migration with disoriented chromosomes, suggesting that CCDC141 is required for radial migration through DISC1 and myosin II-mediated centrosome positioning during neuronal development. |
| Synonyms:             | CAMDI  |

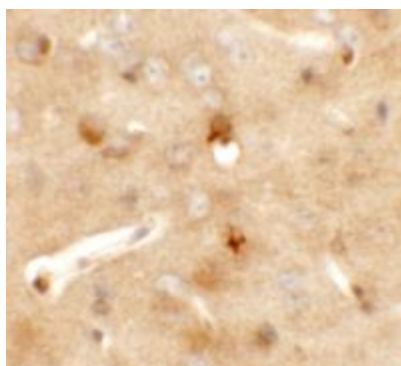


[View online »](#)

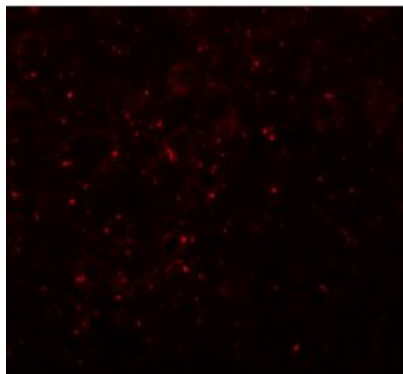
## Product images:



Western blot analysis of CCDC141 in SK-N-SH cell tissue lysate with CCDC141 antibody at 1 ug/mL in (A) the absence and (B) the presence of blocking peptide



Immunohistochemistry of CCDC141 in mouse brain tissue with CCDC141 antibody at 5 ug/mL.



Immunofluorescence of CCDC141 in mouse brain tissue with CCDC141 antibody at 20 ug/mL.