

Product datasheet for **TA320161**

SIGLEC15 Rabbit Polyclonal Antibody

Product data:

Product Type:	Primary Antibodies
Applications:	IHC, WB
Recommended Dilution:	WB: 1 - 2 ug/mL, ICC: 2.5 ug/mL
Reactivity:	Human, Mouse, Rat
Host:	Rabbit
Isotype:	IgG
Clonality:	Polyclonal
Immunogen:	SIGLEC15 antibody was raised against a 15 amino acid synthetic peptide near the amino terminus of human SIGLEC15.
Formulation:	SIGLEC15 Antibody is supplied in PBS containing 0.02% sodium azide.
Concentration:	1ug/ul
Purification:	SIGLEC15 Antibody is affinity chromatography purified via peptide column.
Conjugation:	Unconjugated
Storage:	Store at -20°C as received.
Stability:	Stable for 12 months from date of receipt.
Gene Name:	sialic acid binding Ig like lectin 15
Database Link:	NP_998767 Entrez Gene 498888 Rat Entrez Gene 620235 Mouse Entrez Gene 284266 Human Q6ZMC9
Background:	SIGLEC15 Antibody: Siglecs are vertebrate cell-surface lectins that recognize sialylated glycans and are involved in many physiological processes, such as glycoprotein turnover, cellular trafficking, and pathogen recognition. Most Siglecs are expressed on cells of the immune system. SIGLEC15 is a type-I transmembrane protein consisting of two immunoglobulin (Ig)-like domains, a transmembrane domain containing a lysine residue, and a short cytoplasmic tail. SIGLEC15 can interact with the activating adaptor molecules DAP12/10. Its activating signaling potential and unique preference for glycan recognition implies that SIGLEC15 may be involved in the immune surveillance of tumors and probably plays a conserved, regulatory role in the immune system of vertebrates.

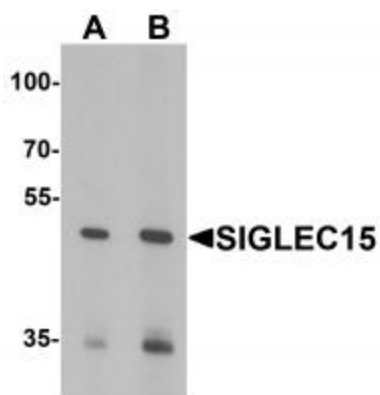


[View online »](#)

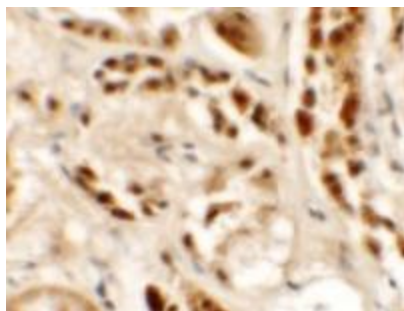
Synonyms: CD33L3; HsT1361; SIGLEC-15

Protein Families: Transmembrane

Product images:



Western blot analysis of SIGLEC15 in Rat kidney tissue lysate with SIGLEC15 antibody at (A) 1 and (B) 2 ug/mL



Immunohistochemistry of SIGLEC15 in human kidney tissue with SIGLEC15 antibody at 2.5 ug/mL.