

## Product datasheet for **TA320159**

### SPRYD4 Rabbit Polyclonal Antibody

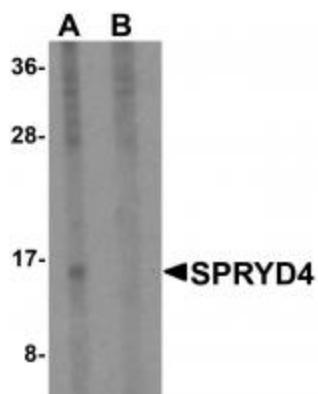
#### Product data:

Product Type:	Primary Antibodies
Applications:	IF, IHC, WB
Recommended Dilution:	WB: 1 ug/mL, ICC: 2.5 ug/mL, IF: 20 ug/mL
Reactivity:	Human, Mouse, Rat
Host:	Rabbit
Isotype:	IgG
Clonality:	Polyclonal
Immunogen:	SPRYD4 antibody was raised against an 18 amino acid synthetic peptide near the center of human SPRYD4.
Formulation:	SPRYD4 Antibody is supplied in PBS containing 0.02% sodium azide.
Concentration:	1ug/ul
Purification:	SPRYD4 Antibody is affinity chromatography purified via peptide column.
Conjugation:	Unconjugated
Storage:	Store at -20°C as received.
Stability:	Stable for 12 months from date of receipt.
Gene Name:	SPRY domain containing 4
Database Link:	<a href="#">NP_997227</a> <a href="#">Entrez Gene 66701 Mouse</a> <a href="#">Entrez Gene 288772 Rat</a> <a href="#">Entrez Gene 283377 Human</a> <a href="#">Q8WW59</a>
Background:	SPRYD4 Antibody: The SPRY domain-containing protein 4 (SPRYD4) is a member of a family of proteins whose sole common characteristic is the presence of a SPRY domain. SPRY domains are structural domains that were first described in the fungal Dictyostelium discoideum tyrosine kinase spore lysis A. In most systems SPRY domains provide binding sites for regulatory proteins or intramolecular binding sites that maintain the structural integrity of a protein. SPRYD4 is ubiquitously expressed and is most abundant in kidney, brain, bladder, thymus and stomach. Little is known of the function of the SPRYD4 protein.
Synonyms:	DKFZp686N0877
Protein Families:	Druggable Genome

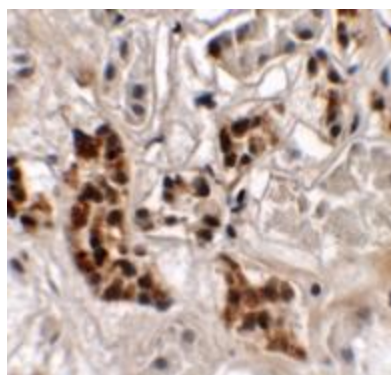


[View online »](#)

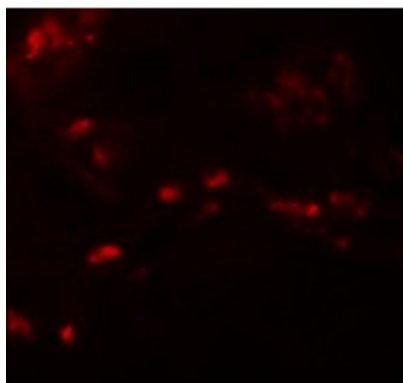
## Product images:



Western blot analysis of SPRYD4 in mouse kidney tissue lysate with SPRYD4 antibody at 1 ug/mL in (A) the absence and (B) the presence of blocking peptide



Immunohistochemistry of SPRYD4 in human kidney tissue with SPRYD4 antibody at 2.5 ug/mL.



Immunofluorescence of SPRYD4 in human kidney tissue with SPRYD4 antibody at 20 ug/mL.