

## Product datasheet for **TA320158**

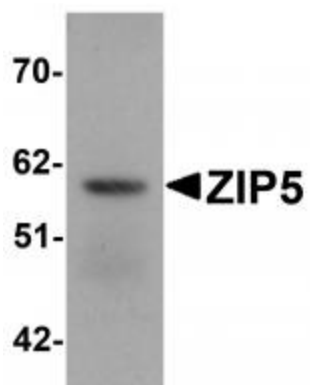
### SLC39A5 Rabbit Polyclonal Antibody

#### Product data:

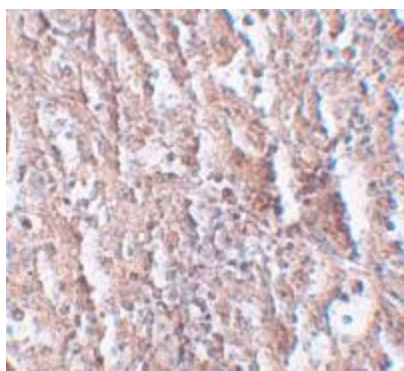
Product Type:	Primary Antibodies
Applications:	IF, IHC, WB
Recommended Dilution:	WB: 1 - 2 ug/mL, ICC: 2.5 ug/mL, IF: 20 ug/mL
Reactivity:	Human, Mouse
Host:	Rabbit
Isotype:	IgG
Clonality:	Polyclonal
Immunogen:	ZIP5 antibody was raised against a 17 amino acid synthetic peptide near the center of human ZIP5.
Formulation:	ZIP5 Antibody is supplied in PBS containing 0.02% sodium azide.
Purification:	ZIP5 Antibody is affinity chromatography purified via peptide column.
Conjugation:	Unconjugated
Storage:	Store at -20°C as received.
Stability:	Stable for 12 months from date of receipt.
Gene Name:	solute carrier family 39 member 5
Database Link:	<a href="#">NP_001128667</a> <a href="#">Entrez Gene 283375 Human</a> <a href="#">Q6ZMH5</a>
Background:	ZIP5 Antibody: The zinc transporter ZIP5, also known as SLC39A5, is a member of a family of divalent ion transporters. Zinc is an essential ion for cells and plays significant roles in the growth, development, and differentiation. ZIP5 is closely related to ZIP4, and is found in many of the same tissues, including intestine, pancreas, liver, and kidney, but unlike ZIP4, ZIP5 localizes to the basolateral membrane in kidney cells and its activity is not downregulated by zinc repletion. Recent evidence suggests that ZIP4 and ZIP5 are reciprocally regulated, with translation of ZIP5 mRNA decreasing and ZIP5 protein being rapidly internalized and degraded in response to zinc deficiency.
Synonyms:	LZT-Hs7; MYP24; ZIP5



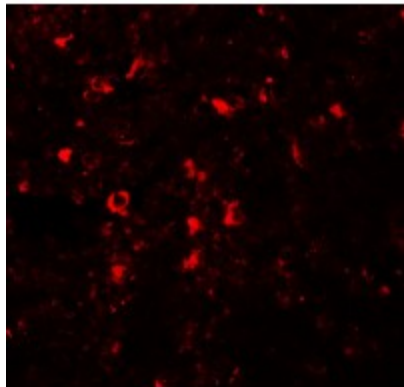
[View online »](#)

**Product images:**

Western blot analysis of ZIP5 in human spleen tissue lysate with ZIP5 antibody at 1 ug/mL.



Immunohistochemistry of ZIP5 in human spleen tissue with ZIP5 antibody at 2.5 ug/mL.



Immunofluorescence of ZIP5 in human spleen tissue with ZIP5 antibody at 20 ug/mL.