

Product datasheet for TA320157

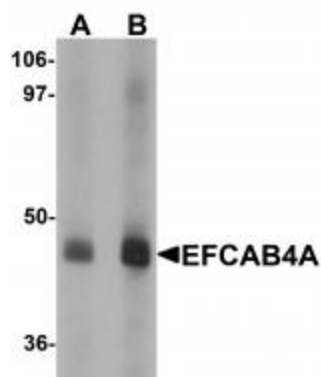
EFCAB4A (CRACR2B) Rabbit Polyclonal Antibody

Product data:

Product Type:	Primary Antibodies
Applications:	WB
Recommended Dilution:	WB: 1 - 2 ug/mL
Reactivity:	Human, Mouse, Rat
Host:	Rabbit
Isotype:	IgG
Clonality:	Polyclonal
Immunogen:	EFCAB4A antibody was raised against a 15 amino acid synthetic peptide near the center of human EFCAB4A.
Formulation:	EFCAB4A Antibody is supplied in PBS containing 0.02% sodium azide.
Concentration:	1ug/ul
Purification:	EFCAB4A Antibody is affinity chromatography purified via peptide column.
Conjugation:	Unconjugated
Storage:	Store at -20°C as received.
Stability:	Stable for 12 months from date of receipt.
Gene Name:	calcium release activated channel regulator 2B
Database Link:	NP_775855 Entrez Gene 213573 Mouse Entrez Gene 309112 Rat Entrez Gene 283229 Human Q8N4Y2
Background:	EFCAB4A Antibody: EFCAB4A, also known as Calcium release-activated calcium channel regulator 2B, is a novel Ca ²⁺ -binding EF-hand protein that is thought to play a key role in store-operated Ca ²⁺ entry in T-cells by regulating CRAC channel activation, but the detailed function is still under investigation. It is likely to play a similar role as the related protein EFCAB4B, which acts as a cytoplasmic calcium-sensor that forms a complex with ORAI1 and STIM1 at the junctional regions between the plasma membrane and the endoplasmic reticulum upon low Ca ²⁺ concentration.
Synonyms:	EFCAB4A


[View online »](#)

Product images:



Western blot analysis of EFCAB4A in human lung tissue lysate with EFCAB4A antibody at (A) 1 and (B) 2 ug/mL.