

Product datasheet for **TA320156**

BCL9L Rabbit Polyclonal Antibody

Product data:

Product Type:	Primary Antibodies
Applications:	IF, WB
Recommended Dilution:	WB: 1 ug/mL, ICC: 10 ug/mL
Reactivity:	Human, Mouse, Rat
Host:	Rabbit
Isotype:	IgG
Clonality:	Polyclonal
Immunogen:	Bcl9L antibody was raised against a 20 amino acid synthetic peptide near the amino terminus of human Bcl9L.
Formulation:	Bcl9L Antibody is supplied in PBS containing 0.02% sodium azide.
Concentration:	1ug/ul
Purification:	Bcl9L Antibody is affinity chromatography purified via peptide column.
Conjugation:	Unconjugated
Storage:	Store at -20°C as received.
Stability:	Stable for 12 months from date of receipt.
Gene Name:	B-cell CLL/lymphoma 9-like
Database Link:	NP_872363 Entrez Gene 80288 Mouse Entrez Gene 300673 Rat Entrez Gene 283149 Human Q86UU0



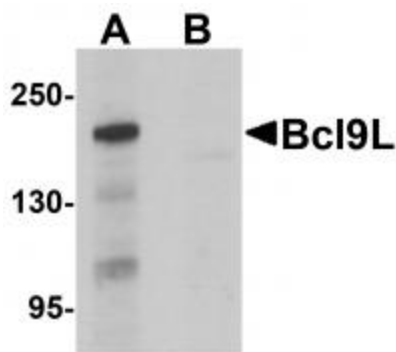
[View online »](#)

Background:

Bcl9L Antibody: Bcl9L, a homolog of Bcl9, was initially identified through a bioinformatics screening. It is expressed in fetal brain, adult lung, eye and prostate, in addition to several types of tumors including pancreatic and prostate cancers. Bcl9L has been shown to interact with beta-catenin, a target of the Wnt signaling pathway, and is required for enhanced beta-catenin-T-cell factor (TCF)-mediated transcription in colorectal tumor cells, possibly by translocating beta-catenin to the nucleus. Other studies have indicated that Bcl9L expression correlates with high nuclear grade cancer phenotype and the expression of ErbB2/HER-2 in breast cancers, suggesting that activity may occur in other types of cancer. Bcl9L has also been shown to be critical for Wnt-mediate regulation of stem cell traits in colon epithelium and adenocarcinomas which are associated with tumor invasion, metastasis, and resistance to therapy.

Synonyms:

BCL9-2; DLNB11

Product images:

Western blot analysis of Bcl9L in HeLa cell lysate with Bcl9L antibody at 1 ug/mL in (A) the absence and (B) the presence of blocking peptide.



Immunocytochemistry of Bcl9L in HeLa cells with Bcl9L antibody at 10 ug/mL.