

Product datasheet for **TA320155**

TAB3 Rabbit Polyclonal Antibody

Product data:

Product Type:	Primary Antibodies
Applications:	IHC
Recommended Dilution:	IHC: 5 ug/mL
Reactivity:	Human
Host:	Rabbit
Isotype:	IgG
Clonality:	Polyclonal
Immunogen:	TAB3 antibody was raised against a 13 amino acid synthetic peptide near the amino terminus of human TAB3.
Formulation:	TAB3 Antibody is supplied in PBS containing 0.02% sodium azide.
Concentration:	1ug/ul
Purification:	TAB3 Antibody is affinity chromatography purified via peptide column.
Conjugation:	Unconjugated
Storage:	Store at -20°C as received.
Stability:	Stable for 12 months from date of receipt.
Gene Name:	TGF-beta activated kinase 1/MAP3K7 binding protein 3
Database Link:	NP_690000 Entrez Gene 257397 Human Q8N5C8

Background: TAB3 Antibody: TAB3 functions in the NF-kappaB signal transduction pathway. It and the similar and functionally redundant protein TAB2, form a ternary complex with the protein kinase TAK1 and either TRAF2 or TRAF6 in response to stimulation with the pro-inflammatory cytokines TNF or IL-1. Subsequent TAK1 kinase activity triggers a signaling cascade leading to activation of the NF-kappaB transcription factor. Recent experiments have shown that TAB2 and the related protein TAB3 constitutively interact with the autophagy mediator Beclin-1; upon induction of autophagy, these proteins dissociate from Beclin-1 and bind TAK1. Overexpression of TAB2 and TAB3 inhibit autophagy, while their depletion triggers it, suggesting that TAB2 and TAB3 act as a control point for autophagy.



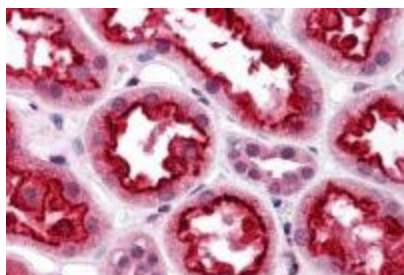
[View online »](#)

Synonyms: MAP3K7IP3; NAP1

Protein Families: Druggable Genome

Protein Pathways: NOD-like receptor signaling pathway

Product images:



Immunohistochemistry of TAB3 in human kidney tissue with TAB3 antibody at 5 ug/mL.