

## Product datasheet for **TA320152**

### **DYNLT2B Rabbit Polyclonal Antibody**

#### **Product data:**

Product Type:	Primary Antibodies
Applications:	IF, WB
Recommended Dilution:	WB: 1 ug/mL, IF: 20 ug/mL
Reactivity:	Human
Host:	Rabbit
Isotype:	IgG
Clonality:	Polyclonal
Immunogen:	TCTEX1D2 antibody was raised against a 16 amino acid synthetic peptide near the amino terminus of human TCTEX1D2.
Formulation:	TCTEX1D2 Antibody is supplied in PBS containing 0.02% sodium azide.
Concentration:	1ug/ul
Purification:	TCTEX1D2 Antibody is affinity chromatography purified via peptide column.
Conjugation:	Unconjugated
Storage:	Store at -20°C as received.
Stability:	Stable for 12 months from date of receipt.
Predicted Protein Size:	16 kDa
Gene Name:	Tctex1 domain containing 2
Database Link:	<a href="#">NP_689986</a> <a href="#">Entrez Gene 255758 Human</a> <a href="#">Q8WW35</a>



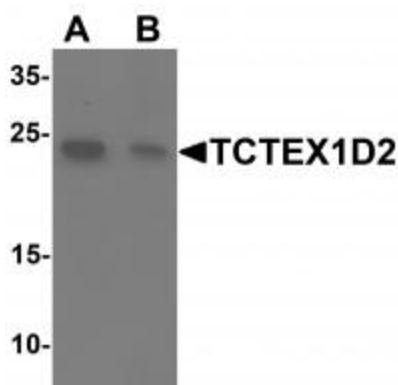
[View online »](#)

**Background:**

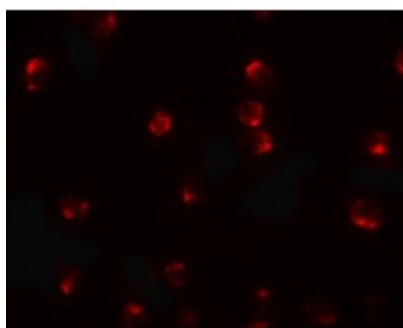
TCTEX1D2 Antibody: Dyneins are multi-subunit, high molecular weight ATPases that interact with microtubules to generate force by converting the chemical energy of ATP into the mechanical energy of movement. Cytoplasmic or axonemal Dynein is an approximately 12 subunit complex of two heavy chains, two intermediate chains to anchor Dynein to its cargo, four smaller intermediate chains and several light chains. It performs functions necessary for cell survival such as organelle transport and centrosome assembly. TCTEX1 is a cytoplasmic dynein light chain found in a complex with Na<sup>+</sup> CP type X (SCN10A). TCTEX1D2, also called TCTEX1 domain containing 2, belongs to the dynein light chain TCTEX-type family. Its function is still under investigation.

**Synonyms:**

MGC33212

**Product images:**


Western blot analysis of TCTEX1D2 in K562 cell lysate with TCTEX1D2 antibody at 1 ug/mL in (A) the absence and (B) the presence of blocking peptide.



Immunofluorescence of TCTEX1D2 in K562 cells with TCTEX1D2 antibody at 20 ug/mL.