

## Product datasheet for **TA320148**

### LEMD2 Rabbit Polyclonal Antibody

#### Product data:

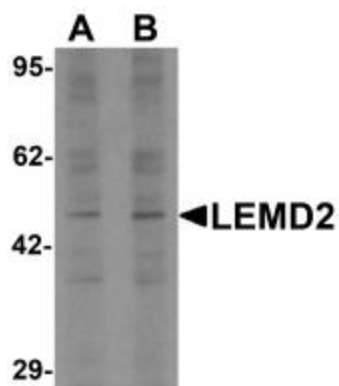
Product Type:	Primary Antibodies
Applications:	IF, WB
Recommended Dilution:	WB: 1 - 2 ug/mL
Reactivity:	Human, Mouse
Host:	Rabbit
Isotype:	IgG
Clonality:	Polyclonal
Immunogen:	LEMD2 antibody was raised against a 16 amino acid synthetic peptide near the center of human LEMD2.
Formulation:	LEMD2 Antibody is supplied in PBS containing 0.02% sodium azide.
Concentration:	1ug/ul
Purification:	LEMD2 Antibody is affinity chromatography purified via peptide column.
Conjugation:	Unconjugated
Storage:	Store at -20°C as received.
Stability:	Stable for 12 months from date of receipt.
Gene Name:	LEM domain containing 2
Database Link:	<a href="#">NP_851853</a> <a href="#">Entrez Gene 224640 Mouse</a> <a href="#">Entrez Gene 221496 Human</a> <a href="#">Q8NC56</a>
Background:	LEMD2 Antibody: The LEM (lamina-associated polypeptide-emerin-MAN1) domain is a motif shared by a group of lamin-interacting proteins of the inner nuclear membrane (INM) and nucleoplasm. One such protein, LEMD2 (LEM domain-containing protein 2), is a lamina-associated protein in the INM involved in nuclear structure organization, containing an N-terminal LEM motif, two transmembrane domains, and a MAN1-Src1p C-terminal (MSC) domain. LEMD2 is a truncated paralog of MAN1, lacking the MAN1-specific C-terminal RNA-recognition motif, but like MAN1 is required for myogenic differentiation. Mutations in LEMD2 are thought to be among the possible causes of muscle disease.
Synonyms:	CTRCT42; dj482C21.1; NET25



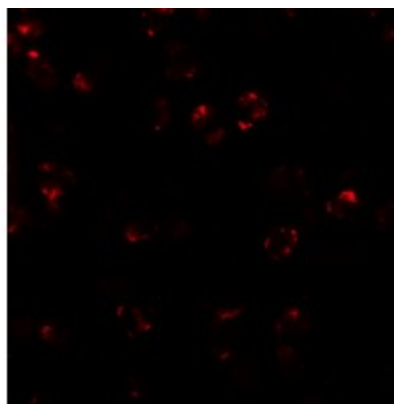
[View online »](#)

Protein Families: Transmembrane

### Product images:



Western blot analysis of LEMD2 in 293 cell lysate with LEMD2 antibody at (A) 1 and (B) 2 ug/mL.



Immunofluorescence of LEMD2 in 3T3 cells with LEMD2 antibody at 20 ug/mL.



Immunocytochemistry of LEMD2 in 3T3 cells with LEMD2 antibody at 2.5 ug/mL.