

Product datasheet for **TA320147**

SLC39A12 Rabbit Polyclonal Antibody

Product data:

Product Type:	Primary Antibodies
Applications:	IF, IHC, WB
Recommended Dilution:	WB: 0.5 - 1 ug/mL, ICC: 2.5 ug/mL, IF: 20 ug/mL
Reactivity:	Human, Mouse
Host:	Rabbit
Isotype:	IgG
Clonality:	Polyclonal
Immunogen:	ZIP12 antibody was raised against a 15 amino acid synthetic peptide near the amino terminus of human ZIP12.
Formulation:	ZIP12 Antibody is supplied in PBS containing 0.02% sodium azide.
Concentration:	1ug/ul
Purification:	ZIP12 Antibody is affinity chromatography purified via peptide column.
Conjugation:	Unconjugated
Storage:	Store at -20°C as received.
Stability:	Stable for 12 months from date of receipt.
Gene Name:	solute carrier family 39 member 12
Database Link:	NP_001138667 Entrez Gene 277468 Mouse Entrez Gene 221074 Human Q504Y0



[View online »](#)

Background:

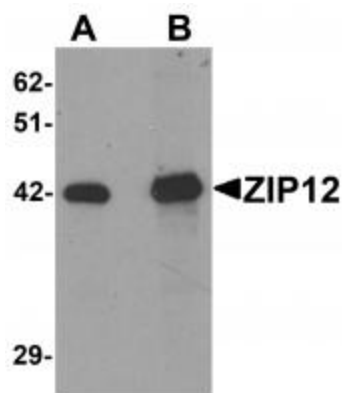
ZIP12 Antibody: The zinc transporter ZIP12, also known as SLC39A12, is a member of a family of divalent ion transporters. Zinc is an essential ion for cells and plays significant roles in the growth, development, and differentiation. The zinc transporter family is divided into four subfamilies (I, II, LIV-1 and gufA). ZIP12 is a multipass membrane protein that belongs to the ZIP transporter subfamily LIV-1. Increased levels of ZIP12 have been observed during acute inflammation in the airway and asthma, suggesting that it may be promote increased zinc uptake, as this can reduce inflammation. The zinc content in brains in individuals with schizophrenia is lower than in individuals with other cerebral diseases, and mutations in ZIP12 have been observed in a small group of schizophrenic patients, suggesting that ZIP12 may play a role in this disease.

Synonyms:

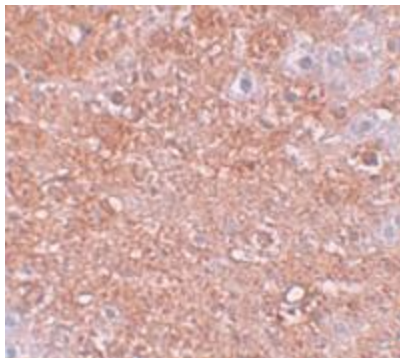
bA570F3.1; LZT-Hs8; ZIP-12

Protein Families:

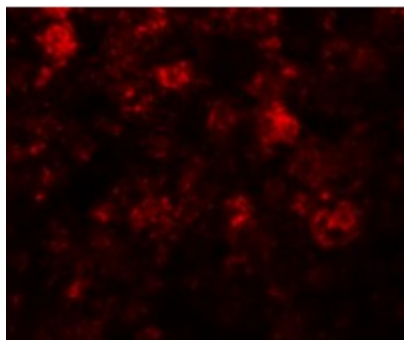
Transmembrane

Product images:

Western blot analysis of ZIP12 in HepG2 cell lysate with ZIP12 antibody at (A) 0.5 and (B) 1 ug/mL.



Immunohistochemistry of ZIP12 in mouse liver tissue with ZIP12 antibody at 2.5 ug/mL.



Immunofluorescence of ZIP12 in mouse liver tissue with ZIP12 antibody at 20 ug/mL.