

Product datasheet for **TA320146**

SPATA19 Chicken Polyclonal Antibody

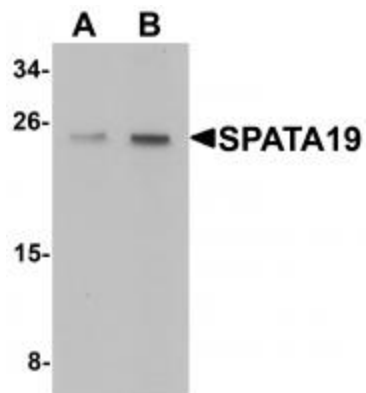
Product data:

Product Type:	Primary Antibodies
Applications:	WB
Recommended Dilution:	WB: 1 - 2 ug/mL
Reactivity:	Human, Mouse, Rat
Host:	Chicken
Isotype:	IgY
Clonality:	Polyclonal
Immunogen:	SPATA19 antibody was raised against an 17 amino acid synthetic peptide near the amino terminus of human SPATA19.
Formulation:	SPATA19 Antibody is supplied in PBS containing 0.02% sodium azide.
Concentration:	1ug/ul
Purification:	SPATA19 Antibody is affinity chromatography purified via peptide column.
Conjugation:	Unconjugated
Storage:	Store at -20°C as received.
Stability:	Stable for 12 months from date of receipt.
Gene Name:	spermatogenesis associated 19
Database Link:	NP_777587 Entrez Gene 75469 Mouse Entrez Gene 171403 Rat Entrez Gene 219938 Human Q7Z5L4
Background:	SPATA19 Antibody: SPATA19, also known as SPERGEN1, was initially identified as a testis-specific protein that localizes to the surface of mitochondria in the middle piece of mature spermatozoa. Recent experiments have shown that elevated levels of SPATA19 have been found in basal cell carcinomas and prostate cancers, suggesting that SPATA19 may serve as a putative cancer biomarker and a target for cancer immunotherapy.
Synonyms:	CT132; SPAS1; spergen1



[View online »](#)

Product images:



Western blot analysis of SPATA19 in rat lung tissue lysate with SPATA19 antibody at (A) 1 and (B) 2 ug/mL.