

## Product datasheet for **TA320145**

### STOX1 Rabbit Polyclonal Antibody

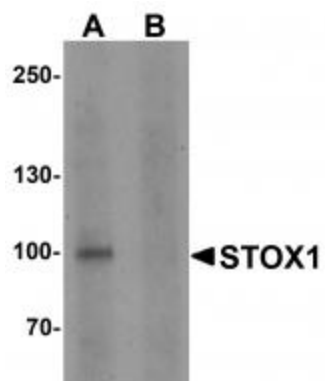
#### Product data:

Product Type:	Primary Antibodies
Applications:	WB
Recommended Dilution:	WB: 1 ug/mL
Reactivity:	Human
Host:	Rabbit
Isotype:	IgG
Clonality:	Polyclonal
Immunogen:	STOX1 antibody was raised against a 14 amino acid synthetic peptide near the carboxy terminus of human STOX1.
Formulation:	STOX1 Antibody is supplied in PBS containing 0.02% sodium azide.
Concentration:	1ug/ul
Purification:	STOX1 Antibody is affinity chromatography purified via peptide column.
Conjugation:	Unconjugated
Storage:	Store at -20°C as received.
Stability:	Stable for 12 months from date of receipt.
Gene Name:	storkhead box 1
Database Link:	<a href="#">NP_689922</a> <a href="#">Entrez Gene 219736 Human</a> <a href="#">Q6ZVD7</a>
Background:	STOX1 Antibody: STOX1 (Storkhead box 1), also known as PEE4 or C10orf24, is a winged-helix domain containing transcription factor believed to play a role in the differentiation of stem cells. As a DNA-binding protein, STOX1 exists as three alternatively spliced isoforms, designated A, B and C, all of which localize to either the cytoplasm or the nucleus. Defects in STOX1 are the cause of pre-eclampsia/eclampsia 4 (PEE4), also known as gestational proteinuric hypertension. STOX1 was also found to be functionally involved in late-onset Alzheimer's disease.
Synonyms:	C10orf24



[View online »](#)

## Product images:



Western blot analysis of STOX1 in human liver tissue lysate with STOX1 antibody at 1 ug/ml in (A) the absence and (B) the presence of blocking peptide.