

Product datasheet for TA320144

YPEL4 Rabbit Polyclonal Antibody

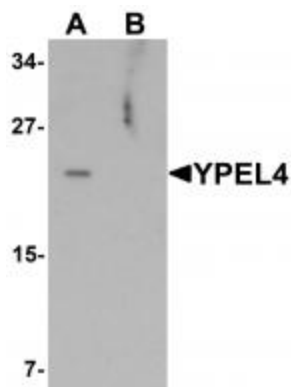
Product data:

Product Type:	Primary Antibodies
Applications:	IF, WB
Recommended Dilution:	WB: 1 ug/mL
Reactivity:	Human, Mouse
Host:	Rabbit
Isotype:	IgG
Clonality:	Polyclonal
Immunogen:	YPEL4 antibody was raised against a 12 amino acid synthetic peptide near the amino terminus of human YPEL4.
Formulation:	YPEL4 Antibody is supplied in PBS containing 0.02% sodium azide.
Concentration:	1ug/ul
Purification:	YPEL4 Antibody is affinity chromatography purified via peptide column.
Conjugation:	Unconjugated
Storage:	Store at -20°C as received.
Stability:	Stable for 12 months from date of receipt.
Gene Name:	yippee like 4
Database Link:	NP_659445 Entrez Gene 241525 Mouse Entrez Gene 219539 Human Q96NS1
Background:	YPEL4 Antibody: YPEL4 (yippee-like 4) belongs to a family of five yippee-like proteins, all of which localize to the centrosome or mitotic spindle and are widely expressed in both adult and fetal tissue. This localization plus the fact that the family of human YPEL proteins share a high degree of sequence homology across species suggests that these proteins may have a conserved function involved in cell division. YPEL4 is ubiquitously expressed in adult tissues and has been shown to associate with the major vault protein (MVP). It has been suggested that MVP can inhibit YPEL4's ability to activate Elk-1 in the MAPK signaling pathway.
Synonyms:	FLJ30213; MGC102723; MGC138324

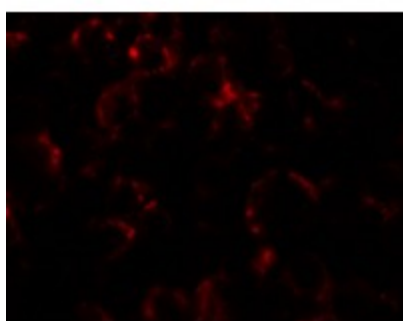


[View online »](#)

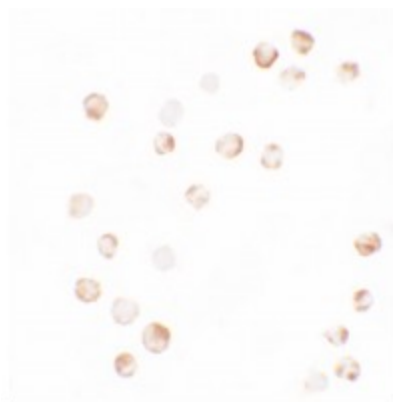
Product images:



Western blot analysis of YPEL4 in SW480 cell lysate with YPEL4 antibody at 1 ug/mL in (A) the absence and (B) the presence of blocking peptide.



Immunofluorescence of YPEL4 in SW480 cells with YPEL4 antibody at 5 ug/ml.



Immunocytochemistry of YPEL4 in SW480 cells with YPEL4 antibody at 2.5 ug/mL.