

## Product datasheet for **TA320143**

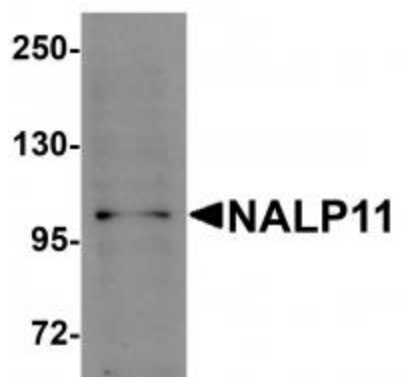
### NLRP11 Rabbit Polyclonal Antibody

#### Product data:

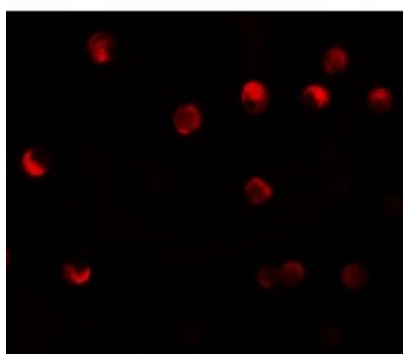
Product Type:	Primary Antibodies
Applications:	IF, WB
Recommended Dilution:	WB: 1 ug/mL, IF: 20 ug/mL
Reactivity:	Human
Host:	Rabbit
Isotype:	IgG
Clonality:	Polyclonal
Immunogen:	NALP11 antibody was raised against a 15 amino acid synthetic peptide near the carboxy terminus of human NALP11.
Formulation:	NALP11 Antibody is supplied in PBS containing 0.02% sodium azide.
Concentration:	1ug/ul
Purification:	NALP11 Antibody is affinity chromatography purified via peptide column.
Conjugation:	Unconjugated
Storage:	Store at -20°C as received.
Stability:	Stable for 12 months from date of receipt.
Gene Name:	NLR family, pyrin domain containing 11
Database Link:	<a href="#">NP_659444</a> <a href="#">Entrez Gene 204801 Human</a> <a href="#">P59045</a>
Background:	NALP11 Antibody: NALP proteins are cytoplasmic proteins that form a subfamily within the larger CATERPILLER family and are thought to play a crucial role in cell proliferation and reproduction. Like all other NALP family members, NALP11 has a C-terminal leucine-rich repeat (LRR) region, an N-terminal Pyrin domain (PYD) followed by a NACHT domain, and a NACHT-associated domain. While little is known about the function of NALP11, it has been suggested that it has been associated with Crohn's disease.
Synonyms:	CLR19.6; NALP11; NOD17; PAN10; PYPAF6; PYPAF7
Protein Families:	Druggable Genome

[View online »](#)

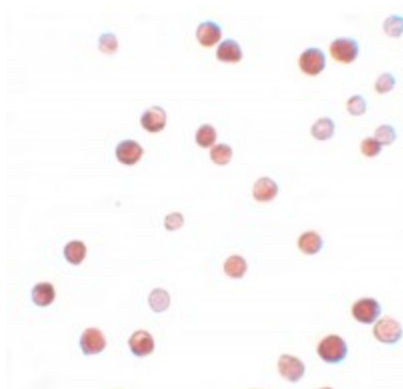
## Product images:



Western blot analysis of NALP11 in HeLa cell lysate with NALP11 antibody at 1 ug/mL.



Immunofluorescence of NALP11 in HeLa cells with NALP11 antibody at 20 ug/mL.



Immunocytochemistry of NALP11 in HeLa cells with NALP11 antibody at 2.5 ug/mL.