

Product datasheet for **TA320142**

CMYA5 Rabbit Polyclonal Antibody

Product data:

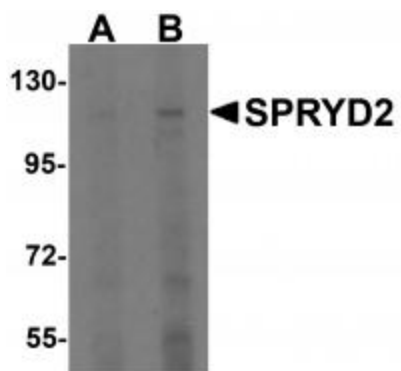
Product Type:	Primary Antibodies
Applications:	IF, IHC, WB
Recommended Dilution:	WB: 1 - 2 ug/mL, ICC: 2.5 ug/mL, IF: 20 ug/mL
Reactivity:	Human, Mouse, Rat
Host:	Rabbit
Isotype:	IgG
Clonality:	Polyclonal
Immunogen:	SPRYD2 antibody was raised against an 18 amino acid synthetic peptide near the carboxy terminus of human SPRYD2.
Formulation:	SPRYD2 Antibody is supplied in PBS containing 0.02% sodium azide.
Concentration:	1ug/ul
Purification:	SPRYD2 Antibody is affinity chromatography purified via peptide column.
Conjugation:	Unconjugated
Storage:	Store at -20°C as received.
Stability:	Stable for 12 months from date of receipt.
Gene Name:	cardiomyopathy associated 5
Database Link:	NP_705838 Entrez Gene 76469 Mouse Entrez Gene 688915 Rat Entrez Gene 202333 Human Q8N3K9
Background:	SPRYD2 Antibody: SPRYD2, also known as Myospryn, was originally identified as the muscle-specific partner of dysbindin and as a Mef-2 target gene. It is a large scaffolding protein localized to the Z-disc/costamere region of striated muscle. SPRYD2 includes a noncanonical tripartite motif (TRIM-like) that lacks the RING domain but consists of a B-box coiled coil (BBC), fibronectin 3 (FN3) repeats, and SPRY domains. SPRYD2 interacts with desmin and calcineurin, and it has been suggested to play a role in the biogenesis of lysosome and negatively regulates slow-fiber-type transformation and skeletal muscle regeneration. SPRYD2 is dysregulated in Duchenne muscular dystrophy.
Synonyms:	C5orf10; SPRYD2; TRIM76



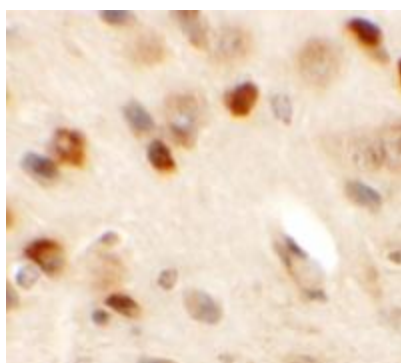
[View online »](#)

Protein Families: Druggable Genome

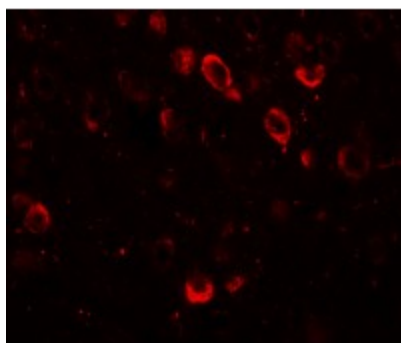
Product images:



Western blot analysis of SPRYD2 in rat brain tissue lysate with SPRYD2 antibody at (A) 1 and (B) 2 ug/mL



Immunohistochemistry of SPRYD2 in mouse brain tissue with SPRYD2 antibody at 2.5 ug/mL.



Immunofluorescence of SPRYD2 in mouse brain tissue with SPRYD2 antibody at 20 ug/mL.