

Product datasheet for **TA320141**

TMEM192 Rabbit Polyclonal Antibody

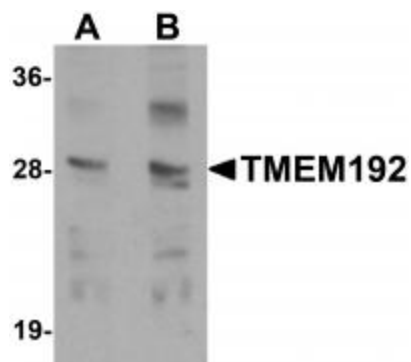
Product data:

Product Type:	Primary Antibodies
Applications:	IF, IHC, WB
Recommended Dilution:	WB: 0.5 - 1 ug/mL, ICC: 5 ug/mL, IF: 20 ug/mL
Reactivity:	Human, Mouse, Rat
Host:	Rabbit
Isotype:	IgG
Clonality:	Polyclonal
Immunogen:	TMEM192 antibody was raised against a 17 amino acid synthetic peptide near the carboxy terminus of human TMEM192.
Formulation:	TMEM192 Antibody is supplied in PBS containing 0.02% sodium azide.
Concentration:	1ug/ul
Purification:	TMEM192 Antibody is affinity chromatography purified via peptide column.
Conjugation:	Unconjugated
Storage:	Store at -20°C as received.
Stability:	Stable for 12 months from date of receipt.
Gene Name:	transmembrane protein 192
Database Link:	NP_001093859 Entrez Gene 73067 Mouse Entrez Gene 361137 Rat Entrez Gene 201931 Human Q8IY95
Background:	TMEM192 Antibody: TMEM192 is a widely expressed, four transmembrane protein that localizes to late endosomal/lysosomal membranes. This localization is mediated by two dileucine motifs present at the amino-terminus of TMEM192. A cysteine residue near the carboxy residue is responsible for disulfide bond formation in TMEM192 homodimers. Little is known about the function of this protein.
Synonyms:	FLJ38482
Protein Families:	Transmembrane

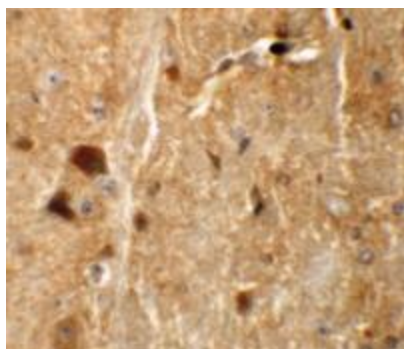


[View online »](#)

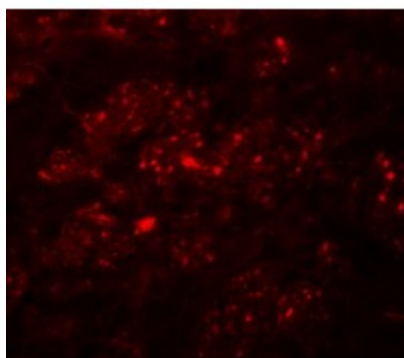
Product images:



Western blot analysis of TMEM192 in SK-N-SH cell lysate with TMEM192 antibody at (A) 0.5 and (B) 1 ug/mL.



Immunohistochemistry of TMEM192 in mouse brain tissue with TMEM192 antibody at 5 ug/mL.



Immunofluorescence of TMEM192 in mouse brain tissue with TMEM192 antibody at 20 ug/mL.