

Product datasheet for **TA320140**

TET3 Rabbit Polyclonal Antibody

Product data:

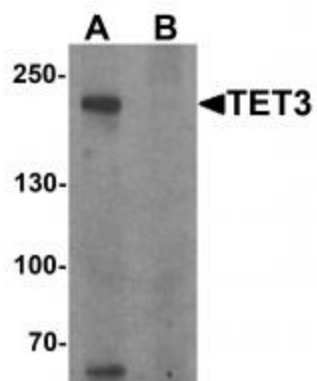
Product Type:	Primary Antibodies
Applications:	IF, WB
Recommended Dilution:	WB: 1 ug/mL, IF: 20 ug/mL
Reactivity:	Human, Mouse, Rat
Host:	Rabbit
Isotype:	IgG
Clonality:	Polyclonal
Immunogen:	TET3 antibody was raised against a 17 amino acid synthetic peptide near the carboxy terminus of human TET3.
Formulation:	TET3 Antibody is supplied in PBS containing 0.02% sodium azide.
Concentration:	lot specific
Purification:	TET3 Antibody is affinity chromatography purified via peptide column.
Conjugation:	Unconjugated
Storage:	Store at -20°C as received.
Stability:	Stable for 12 months from date of receipt.
Predicted Protein Size:	183 kDa
Gene Name:	tet methylcytosine dioxygenase 3
Database Link:	NP_001274420 Entrez Gene 200424 Human O43151
Background:	TET3 Antibody: TET3, a member of the ten-eleven-translocation (TET) family of genes, is a methylcytosine dioxygenase that catalyzes the conversion of methylcytosine to 5-hydroxymethylcytosine and is most abundantly expressed in hematopoietic cells. Unlike the related TET2 protein, mutations in TET3 have not been observed in any myeloid malignancies. TET3 has been shown to be involved in the demethylation of zygotic DNA before the first mitosis and has been suggested to be involved in the epigenetic reprogramming of the zygotic paternal DNA following natural fertilization and may also contribute to somatic cell nuclear reprogramming during animal cloning.



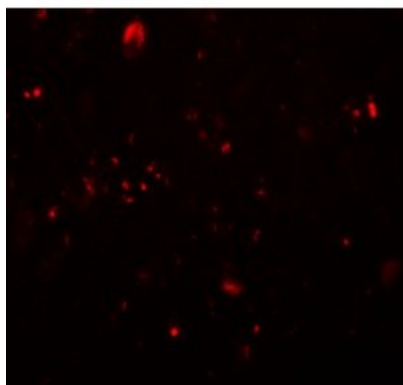
[View online »](#)

Synonyms: hCG_40738

Product images:



Western blot analysis of TET3 in SK-N-SH cell lysate with TET3 antibody at 1 ug/ml in (A) the absence and (B) the presence of blocking peptide.



Immunofluorescence of TET3 in human brain tissue with TET3 antibody at 20 ug/mL.