

## Product datasheet for **TA320139**

### FOXD4L1 Rabbit Polyclonal Antibody

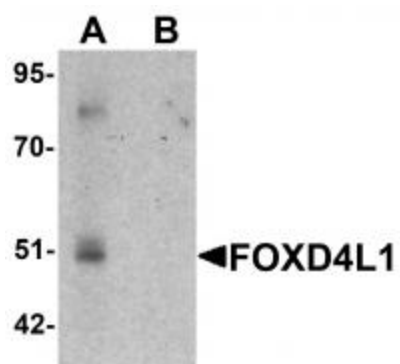
#### Product data:

Product Type:	Primary Antibodies
Applications:	WB
Recommended Dilution:	WB: 1 ug/mL
Reactivity:	Human, Mouse
Host:	Rabbit
Isotype:	IgG
Clonality:	Polyclonal
Immunogen:	FOXD4L1 antibody was raised against a 18 amino acid synthetic peptide near the carboxy terminus of human FOXD4L1.
Formulation:	FOXD4L1 Antibody is supplied in PBS containing 0.02% sodium azide.
Concentration:	1ug/ul
Purification:	FOXD4L1 Antibody is affinity chromatography purified via peptide column.
Conjugation:	Unconjugated
Storage:	Store at -20°C as received.
Stability:	Stable for 12 months from date of receipt.
Gene Name:	forkhead box D4-like 1
Database Link:	<a href="#">NP_036316</a> <a href="#">Entrez Gene 200350 Human Q9NU39</a>
Background:	FOXD4L1 Antibody: FOXD4L1, also known as FOXD5, is a member of the forkhead/winged-helix (FOX) family of transcription factors with highly conserved FOX DNA-binding domains. Members of the FOX family of transcription factors are regulators of embryogenesis and is thought to play a role in human cancer. FOXD4L1 is a forkhead transcription factor that functions as both a transcriptional activator and repressor and acts upstream of several other neural transcription factors to maintain neural fate, regulate neural plate patterning, and delay the expression of neural differentiation factors.
Synonyms:	bA395L14.1; FOXD5



[View online »](#)

## Product images:



Western blot analysis of FOXD4L1 in A-20 cell lysate with FOXD4L1 antibody at 1 ug/mL in (A) the absence and (B) the presence of blocking peptide.