

Product datasheet for **TA320138**

TORC2 (CRTC2) Rabbit Polyclonal Antibody

Product data:

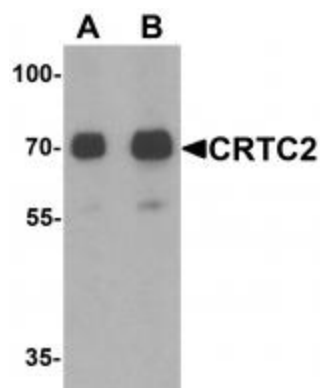
Product Type:	Primary Antibodies
Applications:	IF, IHC, WB
Recommended Dilution:	WB: 1 - 2 ug/mL
Reactivity:	Human, Mouse, Rat
Host:	Rabbit
Isotype:	IgG
Clonality:	Polyclonal
Immunogen:	CRTC2 antibody was raised against a 16 amino acid peptide near the carboxy terminus of human CRTC2.
Formulation:	CRTC2 Antibody is supplied in PBS containing 0.02% sodium azide.
Concentration:	1ug/ul
Purification:	CRTC2 Antibody is affinity chromatography purified via peptide column.
Conjugation:	Unconjugated
Storage:	Store at -20°C as received.
Stability:	Stable for 12 months from date of receipt.
Predicted Protein Size:	Predicted: 67, 76 kDa; Observed: 70 kDa
Gene Name:	CREB regulated transcription coactivator 2
Database Link:	NP_859066 Entrez Gene 74343 MouseEntrez Gene 310615 RatEntrez Gene 200186 Human Q53ET0
Background:	CRTC2 Antibody: CRTC2, also known as TORC2 (Transducers Of Regulated cAMP Response Element-Binding (CREB)) 2 and the related protein CRTC1 are potent CREB coactivators that are exported from the nucleus in a CRM1-dependent manner via phosphorylation-dependent interactions. Studies suggest that their phosphorylation and nuclear/cytoplasmic shuttling play an important role in the regulation of gluconeogenesis by cAMP. CRTC2 is present in both B and T-lymphocytes and abundantly expressed in the thymus. Its activity is important in regulating the expression of genes involved in cellular energy metabolism while CRTC1 is essential for energy balance and fertility.



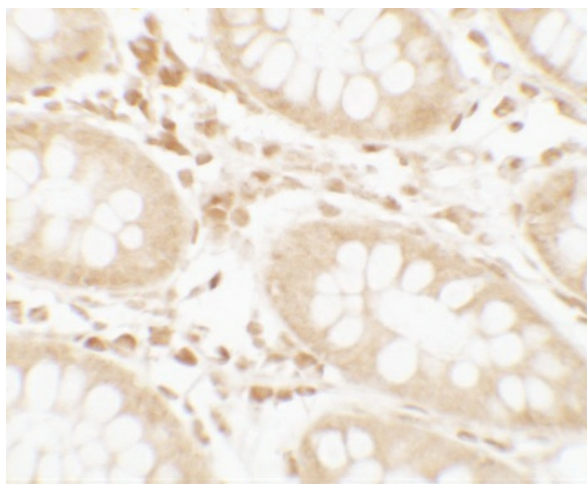
[View online »](#)

Synonyms: TORC-2; TORC2

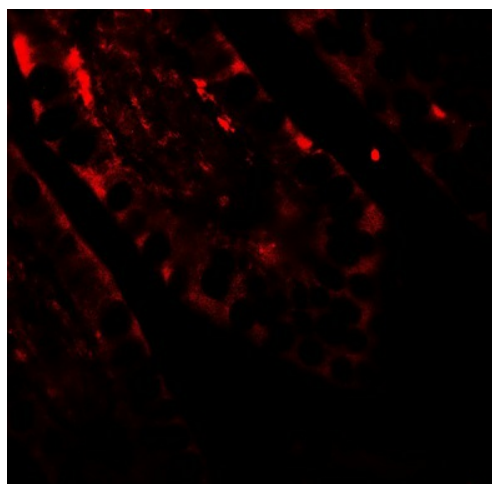
Product images:



Western blot analysis of CRTC2 in human small intestine tissue lysate with CRTC2 antibody at (A) 0.5 and (B) 1 ug/mL.



Immunohistochemistry of CRTC2 in human small intestine tissue with CRTC2 antibody at 2.5 ug/mL.



Immunofluorescence of CRTC2 in human small intestine tissue with CRTC2 antibody at 20 ug/mL.