

Product datasheet for **TA320136**

NLRP7 Rabbit Polyclonal Antibody

Product data:

Product Type:	Primary Antibodies
Applications:	IF, IHC, WB
Recommended Dilution:	WB: 1 ug/mL, ICC: 10 ug/mL, IF: 20 ug/mL
Reactivity:	Human
Host:	Rabbit
Isotype:	IgG
Clonality:	Polyclonal
Immunogen:	NALP7 antibody was raised against an 18 amino acid synthetic peptide near the amino terminus of human NALP7.
Formulation:	NALP7 Antibody is supplied in PBS containing 0.02% sodium azide.
Concentration:	1ug/ul
Purification:	NALP7 Antibody is affinity chromatography purified via peptide column.
Conjugation:	Unconjugated
Storage:	Store at -20°C as received.
Stability:	Stable for 12 months from date of receipt.
Gene Name:	NLR family, pyrin domain containing 7
Database Link:	NP_631915 Entrez Gene 199713 Human Q8WX94



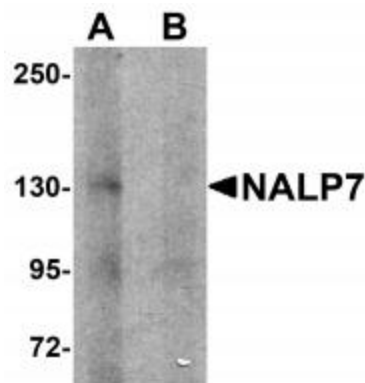
[View online »](#)

Background:

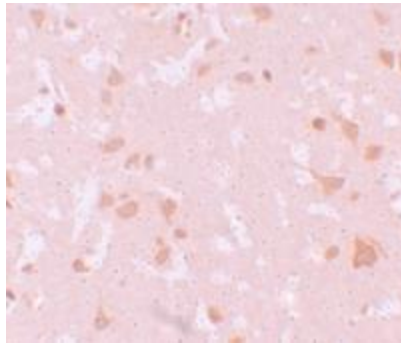
NALP7 Antibody: NOD proteins include the apoptosis regulator APAF1 (apoptotic protease activating factor 1) and mammalian NOD-LRR proteins. NALP7, also known as PYPAF3, a member of the related PYRIN-containing APAF1-like proteins (PYPAFs/NALPs) is thought to play a crucial role in cell proliferation. NALP7 has a C-terminal leucine-rich repeat (LRR) region, an N-terminal Pyrin domain (PYD) followed by a NACHT domain, and a NACHT-associated domain. It is expressed in numerous tissues including uterus and ovary, with low levels in heart and brain. NALP7 inhibits caspase-1-dependent interleukin-1 β secretion and is a feedback regulator of interleukin-1 β secretion. Defects in the NALP7 gene are known to cause the formation of a hydatidiform mole (HYDM) and reduce the growth of carcinoma cell lines.

Synonyms:

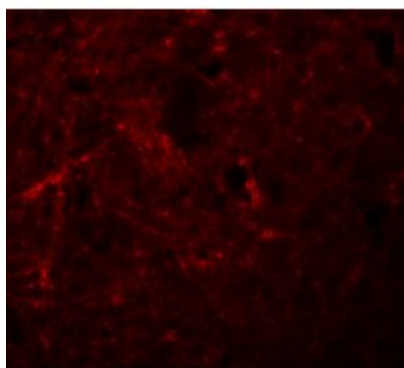
CLR19.4; HYDM; NALP7; NOD12; PAN7; PYPAF3

Product images:

Western blot analysis of NALP7 in human brain tissue lysate with NALP7 antibody at 1 μ g/mL in (A) the absence and (B) the presence of blocking peptide.



Immunohistochemistry of NALP7 in human brain tissue with NALP7 antibody at 10 μ g/mL.



Immunofluorescence of NALP7 in human brain tissue with NALP7 antibody at 20 ug/mL.