

Product datasheet for **TA320135**

NLRC3 Rabbit Polyclonal Antibody

Product data:

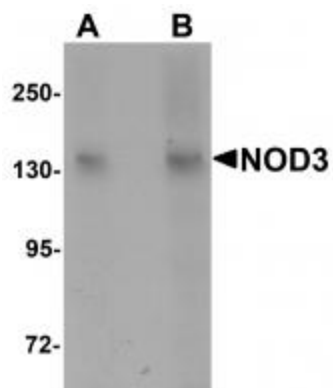
Product Type:	Primary Antibodies
Applications:	IF, WB
Recommended Dilution:	WB: 1 - 2 ug/mL, IF: 20 ug/mL
Reactivity:	Human, Mouse, Rat
Host:	Rabbit
Isotype:	IgG
Clonality:	Polyclonal
Immunogen:	NOD3 antibody was raised against an 18 amino acid synthetic peptide near the center of human NOD3.
Formulation:	NOD3 Antibody is supplied in PBS containing 0.02% sodium azide.
Concentration:	1ug/ul
Purification:	NOD3 Antibody is affinity chromatography purified via peptide column.
Conjugation:	Unconjugated
Storage:	Store at -20°C as received.
Stability:	Stable for 12 months from date of receipt.
Gene Name:	NLR family, CARD domain containing 3
Database Link:	NP_849172 Entrez Gene 268857 Mouse Entrez Gene 287070 Rat Entrez Gene 197358 Human Q7RTR2
Background:	NOD3 Antibody: NOD3 is a member of the NOD (nucleotide-binding oligomerization domain) family, a group of proteins that are involved in innate immune defense. NOD3 also known as NLR family CARD containing 3 (NLRC3), is predominantly expressed in the immune system, particularly in T lymphocytes, and its expression is strongly down-regulated following stimulation of the T-cell receptor complex and CD28, suggesting that NOD3 plays a role in attenuating the activation of T cells. NOD3 inhibits NF-kappaB, AP-1 and NFAT transcriptional activation in Jurkat T cells downstream of CD3/CD28 stimulation or treatment with PMA/ionomycin and decreases IL-2 and CD25 mRNA induction in activated cells.
Synonyms:	CLR16.2; NOD3



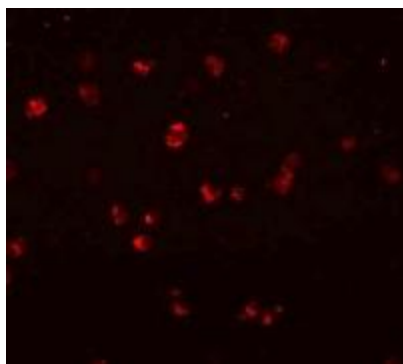
[View online »](#)

Protein Families: Druggable Genome

Product images:



Western blot analysis of NOD3 in 3T3 cell lysate with NOD3 antibody at (A) 1 and (B) 2 ug/mL.



Immunofluorescence of NOD3 in Jurkat cells with NOD3 antibody at 20 ug/mL.