

Product datasheet for **TA320134**

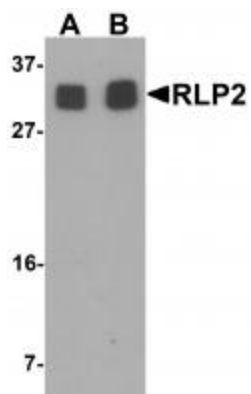
RILPL2 Rabbit Polyclonal Antibody

Product data:

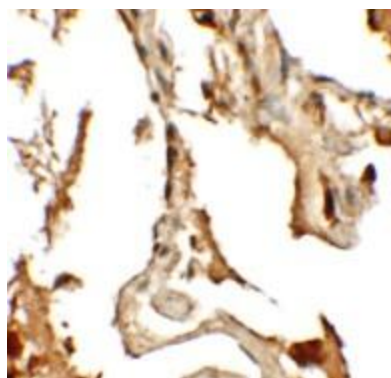
Product Type:	Primary Antibodies
Applications:	IF, IHC, WB
Recommended Dilution:	WB: 1 - 2 ug/mL, ICC: 2.5 ug/mL
Reactivity:	Human
Host:	Rabbit
Isotype:	IgG
Clonality:	Polyclonal
Immunogen:	RLP2 antibody was raised against an 16 amino acid synthetic peptide near the center of human RLP2.
Formulation:	RLP2 Antibody is supplied in PBS containing 0.02% sodium azide.
Concentration:	1ug/ul
Purification:	RLP2 Antibody is affinity chromatography purified via peptide column.
Conjugation:	Unconjugated
Storage:	Store at -20°C as received.
Stability:	Stable for 12 months from date of receipt.
Gene Name:	Rab interacting lysosomal protein like 2
Database Link:	NP_659495 Entrez Gene 196383 Human Q969X0
Background:	RLP2 Antibody: The Rab interacting lysosomal protein-like 2 (RLP2) protein is related to the lysosomal protein RILP which interacts with RAB7, a small GTPase that controls transport to endocytic degradative compartments. Little is known of the exact function of RLP2, but it is thought that RILP is a downstream effector of RAB7 and both proteins act together in the regulation of late endocytic traffic, suggesting that RLP2 may be involved in endocytic traffic with RILP or play a similar role. RILP and possible RLP2 may also play a role in the biogenesis of multivesicular bodies.
Synonyms:	RLP2



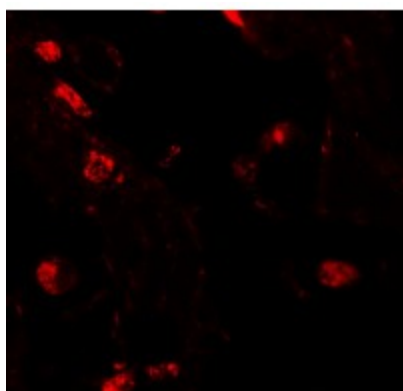
[View online »](#)

Product images:

Western blot analysis of RLP2 in A549 cell lysate with RLP2 antibody at (A) 1 and (B) 2 ug/mL.



Immunohistochemistry of RLP2 in human lung tissue with RLP2 antibody at 2.5 ug/mL.



Immunofluorescence of RLP2 in human lung tissue with RLP2 antibody at 20 ug/mL.