

Product datasheet for **TA320132**

PLAC4 Rabbit Polyclonal Antibody

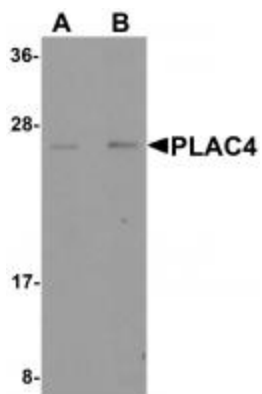
Product data:

Product Type:	Primary Antibodies
Applications:	IF, WB
Recommended Dilution:	WB: 1 - 2 ug/mL, ICC: 10 ug/mL, IF: 20 ug/mL
Reactivity:	Human
Host:	Rabbit
Isotype:	IgG
Clonality:	Polyclonal
Immunogen:	PLAC4 antibody was raised against a 17 amino acid synthetic peptide near the center of human PLAC4.
Formulation:	PLAC4 Antibody is supplied in PBS containing 0.02% sodium azide.
Concentration:	1ug/ul
Purification:	PLAC4 Antibody is affinity chromatography purified via peptide column.
Conjugation:	Unconjugated
Storage:	Store at -20°C as received.
Stability:	Stable for 12 months from date of receipt.
Gene Name:	placenta specific 4
Database Link:	NP_878252 Entrez Gene 191585 Human Q8WY50
Background:	PLAC4 Antibody: PLAC4 (placenta-specific protein 4), was initially discovered as a gene whose mRNA was expressed in placental syncytiotrophoblast and choriocarcinoma cells. While the function of PLAC4 is currently unclear, its gene is known to be located on chromosome 21q22.3. Due to the PLAC4 gene location on chromosome 21 and the release of its mRNA transcripts into maternal bloodstream from the placenta, it has been proposed to be a useful marker noninvasive prenatal chromosome 21 aneuploidy detection, although other reports suggests that PLAC4 mRNA levels are not altered in the maternal circulation of pregnancies with trisomy 21.
Synonyms:	C21orf115; PRED78

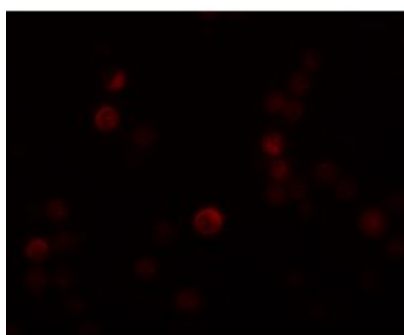


[View online »](#)

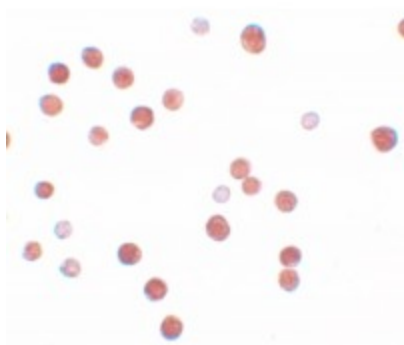
Product images:



Western blot analysis of PLAC4 in human placenta tissue lysate with PLAC4 antibody at (A) 1 and (B) 2 ug/mL.



Immunofluorescence of PLAC4 in HeLa cells with PLAC4 antibody at 20 ug/mL.



Immunocytochemistry of PLAC4 in HeLa cells with PLAC4 antibody at 10 ug/mL.