

Product datasheet for **TA320127**

DCP2 Rabbit Polyclonal Antibody

Product data:

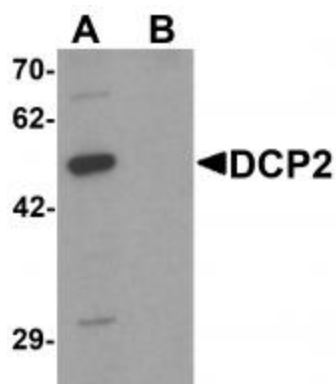
Product Type:	Primary Antibodies
Applications:	IF, WB
Recommended Dilution:	WB: 1 ug/mL, IF: 20 ug/mL
Reactivity:	Human, Mouse, Rat
Host:	Rabbit
Isotype:	IgG
Clonality:	Polyclonal
Immunogen:	DCP2 antibody was raised against an 18 amino acid synthetic peptide near the carboxy terminus of human DCP2.
Formulation:	DCP2 Antibody is supplied in PBS containing 0.02% sodium azide.
Concentration:	1ug/ul
Purification:	DCP2 Antibody is affinity chromatography purified via peptide column.
Conjugation:	Unconjugated
Storage:	Store at -20°C as received.
Stability:	Stable for 12 months from date of receipt.
Predicted Protein Size:	46 kDa
Gene Name:	decapping mRNA 2
Database Link:	NP_689837 Entrez Gene 70640 Mouse Entrez Gene 291604 Rat Entrez Gene 167227 Human Q8IU60
Background:	DCP2 Antibody: The removal, or decapping, of eukaryotic mRNA is an important step in the degradation of mRNA. Decapping protein 2 (DCP2) is the major mRNA decapping enzyme in cells. It is a member of the Nudix hydrolases superfamily of proteins that predominantly catalyze the hydrolysis of small nucleoside diphosphate substrates linked to another moiety. DCP2 is widely expressed in multiple tissues at varying levels, with highest expression seen in testis and brain.
Synonyms:	NUDT20



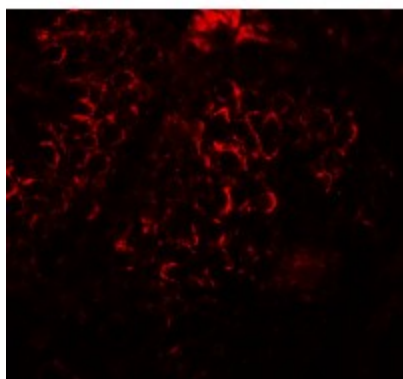
[View online »](#)

Protein Pathways: RNA degradation

Product images:



Western blot analysis of DCP2 in 293 cell lysate with DCP2 antibody at 1 ug/mL in (A) the absence and (B) the presence of blocking peptide.



Immunofluorescence of DCP2 in human testis tissue with DCP2 antibody at 20 ug/mL.